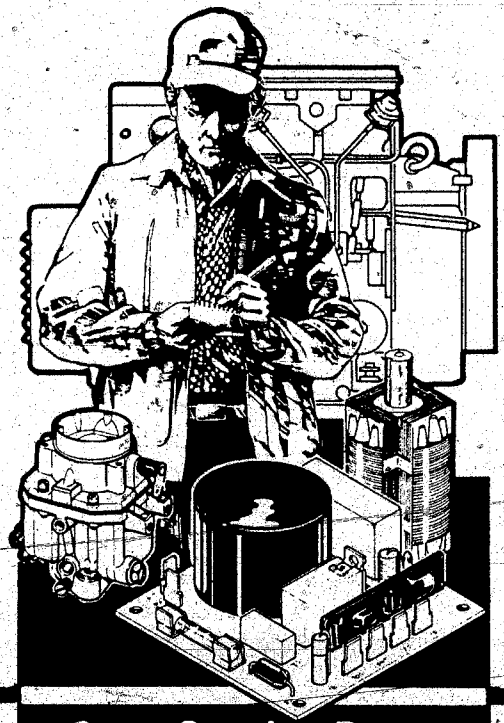


The following catalog
has gaps in its page
numbers, or doesn't
have any numbers.
We have chosen to
leave the page
numbering in the
order that Acrobat
assigns it.

Onan

Parts Manual

NH-RV
GenSet



Onan Service Parts

940-0222
9-90 (Spec J-R)
Replaces 10-88 (Spec J-P)
Printed in U.S.A.

SAFETY PRECAUTIONS

The following symbols are used in Onan manuals to alert users to the potentially dangerous conditions relating to maintenance of the equipment and replacement of parts. Please read and observe.

⚠ DANGER

This symbol warns of immediate hazards which will result in severe personal injury or death.

⚠ WARNING

This symbol refers to a hazard or unsafe practice which can result in severe personal injury or death.

⚠ CAUTION

This symbol refers to a hazard or unsafe practice which can result in personal injury or product or property damage.

MODEL IDENTIFICATION

To avoid errors or delay in filling your parts order, always give the MODEL, SPEC NO., and SERIAL NO. from the Onan nameplate.

For handy reference, insert your nameplate information in the spaces below:

MODEL AND SPEC NO.

SERIAL NO.

PRODUCT SAFETY PRECAUTIONS

⚠ WARNING

Contact with USED ENGINE OILS has been identified by a United States federal agency and some USA state agencies as causing CANCER or REPRODUCTIVE TOXICITY. When checking or changing engine oils take all necessary precautions not to ingest, breathe the fumes or contact the used oil.

⚠ WARNING

Contact with ASBESTOS has been identified by a United States federal agency and some USA state agencies as causing CANCER or REPRODUCTIVE TOXICITY. When handling engine gaskets take all necessary precautions not to ingest, breathe or contact the dust from the gaskets! Use adequate ventilation and wear protective gloves, masks and clothing!

⚠ WARNING

Contact with BENZINE and LEAD, found in gasoline, fuel additives and solvents has been identified by a United States federal agency and some USA agencies as causing CANCER or REPRODUCTIVE TOXICITY. When checking, draining or adding gasoline and fuel additives, or using solvents take all necessary precautions not to ingest, breathe the fumes, or contact the liquids. Use adequate ventilation and wear protective gloves, masks and clothing!

Index

Adapter, Choke
 Adapter, Duct - Air
 Adapter, Filter - Oil
 Adapter, Generator to Engine
 Adapter, Inlet - Carburetor Air
 Adapter, Tube - Breather Hose
 Armature, Generator
 Backplate, Scroll
 Baffle, Breather
 Ball, Fly - Governor
 Base, Oil
 Bearing, Ball
 Bearing, Camshaft
 Bearing, Rear - Crankshaft
 Belt, End - Generator
 Block, Cylinder
 Block, Terminal
 Box, Breaker
 Box, Breaker - Components
 Box, Control
 Box, Outlet
 Brace, Duct - Air Intake
 Bracket, Cleaner - Air
 Bracket, Duct - Air Intake
 Bracket, Mounting - Control
 Bracket, Mounting - Governor
 Bracket, Muffler Hanger - Optional
 Bracket, Mounting - Heatshield
 Bracket, Support - Air Duct
 Breaker, Circuit
 Brush, AC and DC
 Brush, Block
 Bushing, Insulating - Nylon

GRID
 B5
 B5,C13
 A9
 C1,C3
 B3
 B3
 C1,C3
 B13
 A7
 A13
 A11
 C1,C3
 A7
 A7
 C1,C3
 A7
 C5,C7
 B11
 B12
 C5,C7
 C7
 B4
 B3
 B4
 C7
 B2
 B9,B10
 B9,B10
 B4
 C5
 C1,C3
 C1,C3
 C1

Camshaft
 Cap and Indicator, Fill - Oil
 Cap and Valve, Breather
 Carburetor, Gasoline
 Cartridge, Cleaner - Air
 Clamp, Duct - Air
 Clamp, Mounting - Ignition Coil
 Cleaner, Air
 Clip, Sensitivity
 Coil, Ignition
 Condenser
 Condenser, Ignition
 Control
 Control, Start - Remote (Optional)
 Commutator, Generator
 Cover, Gear
 Cover, Box - Breaker
 Cover, Box - Outlet
 Cover, Cleaner - Air
 Cover, Control
 Cover, Generator
 Cover, Scroll
 Cover, Valve
 Crankshaft
 Cup, Governor
 Cup, Intake - Oil Pump
 Cushion, Vibration - Engine End
 Cushion, Vibration - Generator End
 Decal Kit - Generator
 Drain, Filter - Oil
 Duct, Cleaner - Air

A13
 A11
 A7
 B5
 B3
 B4
 B11
 B3,B4
 B1
 B11
 B12
 B11
 C5,C7
 C11
 C1,C3
 B1
 B12
 C7
 B3,B4
 C5
 C1,C3
 B13
 A7
 A13
 A13
 A9
 A11
 A11
 C8
 A9
 B4

Elbow, Adapter (90°)
 Elbow, Street - 45°
 Elbow, Street - 90°
 Element, Choke - Bi-Metal
 Element, Cleaner - Air
 Fan, Generator
 Filter, Oil - Spin-on
 Flywheel
 Fuse
 Gasket, Base - Oil
 Gasket, Box - Breaker
 Gasket, Cap - Oil Fill
 Gasket, Exhaust Tube - Optional
 Gasket Kit, Engine - Complete
 Gasket Kit, Pump - Oil
 Gasket Kit, Remove - Carbon
 Gasket, Manifold - Exhaust
 Gasket, Mounting - Carburetor
 Gasket, Mounting - Carburetor
 Manifold
 Gasket, Mounting - Cylinder Head
 Gasket, Mounting - Gearcase
 Gasket, Mounting - Oil Filter
 Gasket, Mounting - Oil Pan
 Gasket, Mounting - Valve Cover
 Gasket, Plate - Bearing
 Gasket, Valve Guide - Intake
 Gear Assembly, Camshaft
 Gearcase
 Gear, Crankshaft
 Generator
 Governor
 Grommet
 Grommet, Nylon
 Guard, Scroll
 Guide, Valve
 Harness, Wiring
 Harness, Wiring - Optional
 Head, Cylinder
 Holder, Fuse
 Housing, Air
 Housing, Air - Cylinder
 Housing, Choke
 Housing, Pin - Connector
 Hose, Cleaner - Air
 Hub, Cup - Governor
 Insulator, Breather (Optional)
 Insulator, Mounting - Resistor
 Joint, Ball
 Jumper, Block - Terminal
 Key, Gear - Camshaft
 Key, Woodruff
 Kit, Repair - Carburetor
 Kit, Replacement - Lead
 Kit, Tune Up
 Line, Fuel Pump to Carburetor
 Manifold, Exhaust
 Manifold, Intake
 Muffler, Optional
 Numerical Index

GR
 B5
 A9
 B5
 B5
 B4
 C1
 A9
 A1
 C5
 A1
 B1
 A1
 B1
 A8
 A9
 A8
 B9
 B5
 B5
 A7
 B1
 A9
 A1
 A7
 A7
 A7
 A1
 B1
 A1
 C1
 B1
 C7
 C7
 B1
 A7
 C5
 B1
 B1
 B5
 C5
 B3
 A1
 C1
 C5
 B2
 C5
 A1
 A1
 A1
 B5
 B1
 B1
 B5
 B1
 B5
 B5
 C14

Index

Paint, Touch-Up - Enamel	GRID	Seal, O-Ring	G
Pan, Base - Oil	C8	Seal, Valve - Intake	B
Panel, Control	A11	Scroll, Air	A
Pin, Alignment - Gearcase	C5	Shield, Heat - Optional	B
Pin, Alignment - Generator	B1	Shim, Thrust - Crankshaft	A
Pin, Camshaft	C1,C3	Sleeve, Spacer	A
Pin, Connector - Male & Female	A13	Snubber	A
Pin, Piston	C5	Solenoid, LP	C
Pin, Stop - Bearing	A14	Spacer, Intake - Air	B
Pin, Straight - Headless	A7	Spring, Brush	C
Piston and Pin	C1,C3	Spring, Governor	B
Plate, Bearing - Rear	A14	Spring, Valve	A
Plate, Control	A7	Spring, Valve - Oil Bypass	A
Plate, Mounting - Oil Base	C5	Start, Remote (Optional)	C
Plate, Mounting - Rectifier	A11	Stator, Generator	C
Plug, Expansion	C7	Strap, Ground	A
Plug, Spark	A7	Strip, Marker - Terminal Block	C
Point Set, Breaker	B11	Stud, Adjustment - Speed	B
Pointer, Timing	B12	Stud, Mounting - Bearing Plate	A
Preheater Kit, Air - Carburetor	A7	Stud, Mounting - Cylinder Head	A
(Optional)		Stud, Plated	C
Pump, Fuel - Electric	C10	Support, Generator	C
	B5	Switch, Pressure - Low Oil	A
		Switch, Push (SPDT)	C
Rectifier	C7	Switch, Start - Stop	C
Rectifier - Diode	C5		
Regulator, Gas	C13	Tappet, Valve	A
Relay, Armature	C7	Terminal, Lug	B
Relay, Ignition	C5	Terminal, Lug - Ground	B
Relay, Solenoid - Start	C7	Tube, Breather	A
Retainer, "O" Ring	B12	Tube, Exhaust (90° Bend)	B
Retainer, Spring - Valve	A7	Tube, Exhaust - Optional	B
Ring, Collector - Generator	C1,C3	Tube, Oil - Crankcase	A
Ring, Retaining	A13		
Ring, Retaining - Piston Ring	A14	Valve, Bypass - Oil	A
Ring Set, Piston	A14	Valve, Drain - Oil	A
Rod, Connecting	A14	Valve, Intake and Exhaust	A
Rotor, Valve	A7	Valve, Solenoid	E
		Vernatherm	(
Seal, Air Duct to Adapter	B4		
Seal, Air Duct to Breather Port	B4	Wrapper, Generator	(
Seal, Air - Oil Filter	A9		
Seal, Element - Air Cleaner	B4	Yoke, Governor	I
Seal, Oil	B4		
Seal, Oil - Crankshaft	A7		

Introduction

This Catalog applies to the Standard NH Recreational Vehicle Generator Set. Parts are arranged in groups of related items. Each illustrated part is identified by a reference number corresponding to the same reference number in the parts list for that group. Parts illustrations are typical. Using the **Model and Spec No.** from the nameplate, select parts from this Catalog that apply to your set. Unless otherwise mentioned in the description, parts are interchangeable between models. Right and left sides are determined by facing the engine end (front) of the set.

Generator Set Data Table

MODEL AND SPECIFICATION	ELECTRICAL DATA					
	WATTS	VOLTS	HERTZ	WIRE	PHASE	TYPE
5.0 NH-FP/*	5000	120/240	50	**	1	Remote
5.0 NH-53BR/*	5000	110/120	50	**	1	Remote
5.0 NH-53CR/*	5000	120/240	50	**	1	Remote
5.0 NH-57R/*	5000	220/380	50	**	1	Remote
5.5 NH-FJ/*	5500	120/240	50	**	1	Remote
5.5 NH-FP/*	5500	120/240	50	**	1	Remote
5.5 NH-53BR/*	5500	110/220	50	**	1	Remote
5.5 NH-53CR/*	5500	120/240	50	**	1	Remote
6.5 NH-FD/*	6500	120/240	60	**	3	Remote
6.5 NH-FJ/*	6500	120/240	60	**	1	Remote
6.5 NH-3CR/*	6500	120/240	60	**	1	Remote

* - The specification letter advances (A, to B, to C, etc.) with major manufacturing changes.

** - Set is reconnectable for 120 volt, 2 wire; 240 volt, 2 wire; or 120/240 volt, 3 wire service.

NOTE: The letter R in the Model and Spec denotes Electric Start with Start/Stop at both the Set and the Remote Control.

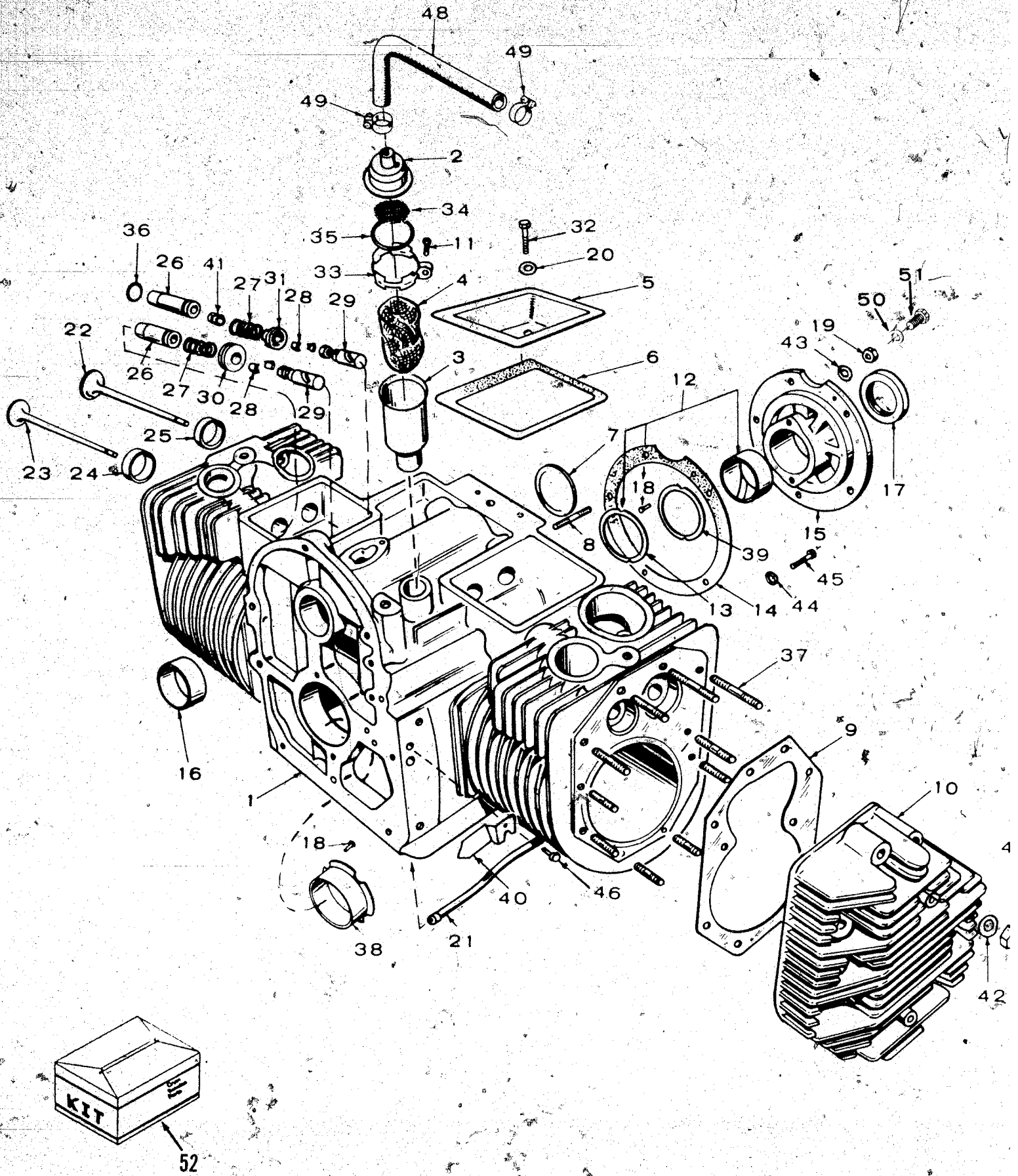
STANDARD PARTS SECTION

This section contains the illustrated parts listing for the standard generator sets listed in the Data Table.

NOTICE!

Items referenced as **Optional** indicate part is factory installed and may not be applicable to all models. For field conversions additional parts are usually required.

Cylinder Block

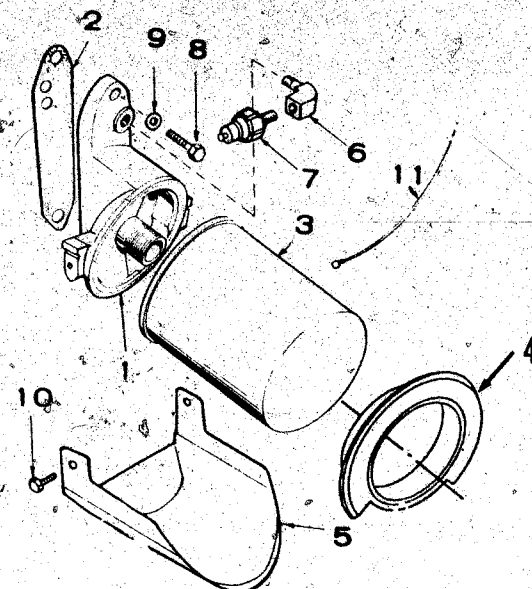
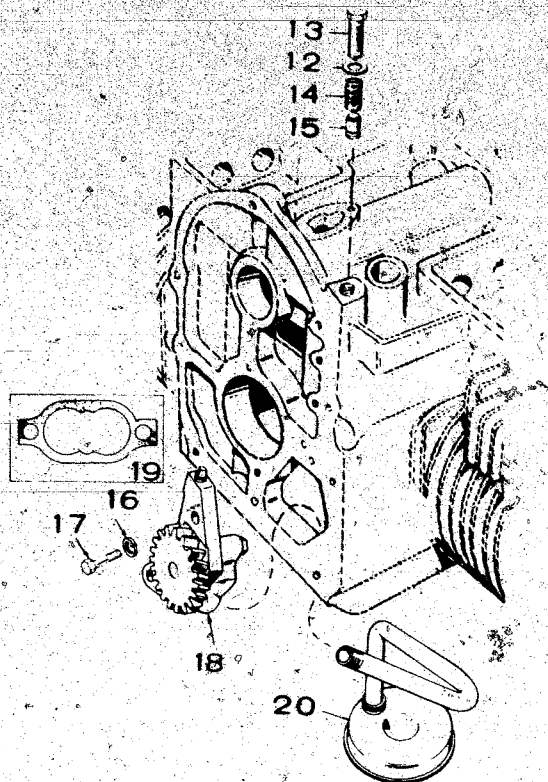


Cylinder Block

REF NO.	PART NO.	QTY USED	PART DESCRIPTION	REF NO.	PART NO.	QTY USED	PART DESCRIPTION
1	110-2340	1	Block, Cylinder (Includes Parts Marked *)	27	110-0539	4	Spring, Valve
2	123-0954	1	Cap and Valve, Breather	28	110-0639	8	Lock, Spring - Valve
3	123-0952	1	*Tube, Breather	29			Tappet, Valve
4			Baffle, Breather		115-0006	4	Standard
	123-0865	1	Spec J		115-0006-05	4	.005" Oversize
	123-1417	1	* Begin Spec K	30	110-0904	2	Rotator, Valve
5	110-1624	2	Cover, Valve	31	110-0893	4	Retainer, Spring - Valve
6	110-3575	2	Gasket, Mounting - Valve Cover	32	800-0011	2	Screw, Cap - Hex Head (1/4-20 x 2")
7	517-0048	1	*Plug, Expansion	33	123-0951	1	Clamp, Loop - Breather Tube
8	520-0736	5	*Stud, Mounting - Bearing Plate	34	123-0958	2	Screen, Tube Breather
9	110-2987	2	Gasket, Mounting - Cylinder Head	35	509-0117	1	Seal, "O" Ring - Breather Tube
10			Head, Cylinder	36	110-3136	2	*Gasket, Valve Guide - Intake
	110-1912	1	Spec J through N	37			Stud, Mounting - Cylinder
	110-1913	1	Right Side		520-0717	8	(3/8 x 1-7/8") (Bottom Holes)
			Left Side		520-0773	12	(3/8 x 2-9/16") (Top Holes)
	110-2713	2	Left and Right Side	38			Bearing, Sleeve - Flanged Crankshaft
11	809-0035	1	Screw, Tapping - Round Head (#8 x 3/4")		101-0432	1	* Standard
12			Bearing, Rear - Crankshaft		101-0432-02	1	.002" Undersize
	101-0450	1	* Standard		101-0432-10	1	.010" Undersize
	101-0450-02	1	.002" Undersize		101-0432-20	1	.020" Undersize
	101-0450-10	1	.010" Undersize		101-0432-30	1	.030" Undersize
	101-0450-20	1	.020" Undersize	39	104-0776	AR	Shim, Thrust - Crankshaft
	101-0450-30	1	.030" Undersize	40	160-1190	1	Pointer, Timing
13	104-0575	2	*Washer, Thrust - Crankshaft Bearing	41	110-3604	2	Seal, Valve - Intake
14	101-0782	1	*Gasket, Plate - Bearing	42	526-0250	20	Washer, Flat (3/8")
15	101-0439	1	*Plate, Bearing - Rear	43	526-0251	5	Washer, Flat (3/8")
16	101-0405	2	*Bearing, Camshaft				Use w/Studs Rear Bearing Plate
17	509-0041	1	Seal, Oil - Crankshaft	44	526-0066	2	*Washer, Flat (Copper) (3/8")
18	516-0072	4	*Pin, Stop - Bearing	45	800-0046	2	*Screw, Cap - Hex Head (3/8-16 x 1/2")
19	104-0091	5	*Nut, Hex (Special)	46	821-0010	1	Screw, Self-Locking - Hex Washer Head (1/4-20 x 1/2")
20	526-0063	2	Washer, Flat (Copper) (1/4")	47	104-0091	20	Nut, Hex (Special)
21	120-0680	1	*Tube, Oil - Crankcase	48			Tube, Breather
22			Valve, Intake		503-0761	1	Spec J
	110-1718	2	Begin Spec K		503-0857	1	Begin Spec K
	110-1974	2	Spec J	49			Clamp, Tube - Breather
23	110-1719	2	Valve, Exhaust		503-0769	2	Spec J
24			Insert, Valve Seat - Exhaust		503-0770	2	Begin Spec K
	110-1716	2	* Standard	50	850-0050	5	Washer, Lock (3/8")
	110-1716-02	2	.002" Oversize				Later Models
	110-1716-05	2	.005" Oversize				W/O Studs Rear Bearing P
	110-1716-10	2	.010" Oversize	51	800-0051	5	Screw, Cap - Hex Head (3/8-16 x 1-1/4")
	110-1716-25	2	.025" Oversize				Later Models W/O Studs
25			Insert, Valve Seat - Intake				Rear Bearing Plate
	110-3461	2	* Standard	52			Kit, Gasket
	110-3461-01	2	.002" Oversize		168-0190	1	Carbon Removal
	110-3461-02	2	.005" Oversize		168-0191	1	Engine, Complete
	110-3461-03	2	.010" Oversize				
	110-3461-04	2	.025" Oversize				
26			*Guide, Valve				
	110-3167	2	Exhaust				
	110-3168	2	Intake				

* - Parts Included in Cylinder Block.

Oil System

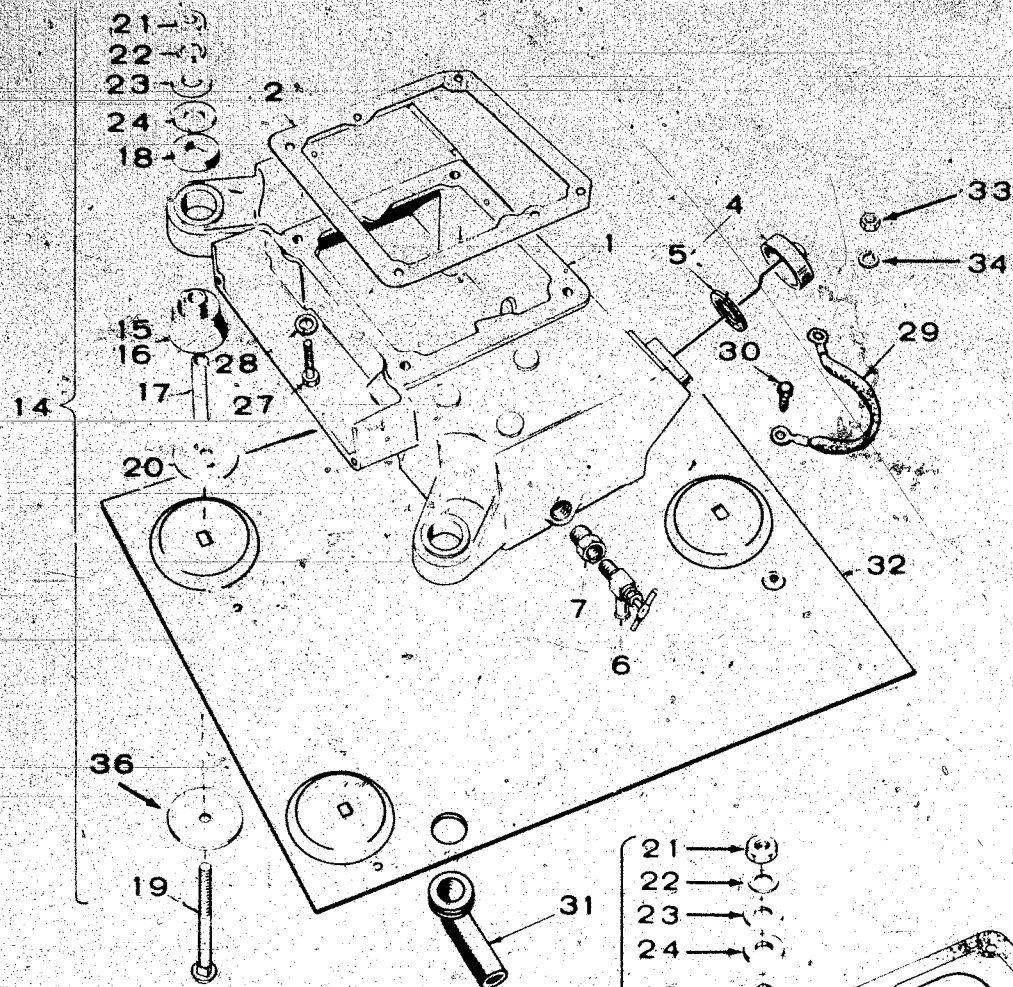


REF NO.	PART NO.	QTY USED	PART DESCRIPTION
1	122-0320	1	Adapter, Filter - Oil
2	122-0774	1	Gasket, Mounting - Oil Filter Adapter
3	122-0323	1	Filter, Oil - Spin-on
4	122-0502	1	Seal, Air - Oil Filter
5	122-0360	1	Drain, Filter - Oil
6	502-0053	1	Elbow, Street - 45°
7			Switch, Pressure - Low Oil
	309-0237	1	Spec J
	309-0322	1	Begin Spec K
8	800-0028	2	Screw, Cap - Hex Head (5/16-18 x 1")
9	526-0065	2	Washer, Flat - Copper (5/16")
10	815-0194	2	Screw, Tapping - Hex Head (#10-32 x 3/8")
11			Lead, Electrical - Low Oil Pressure Switch
	336-2379	1	Spec J
	336-3377	1	Begin Spec K

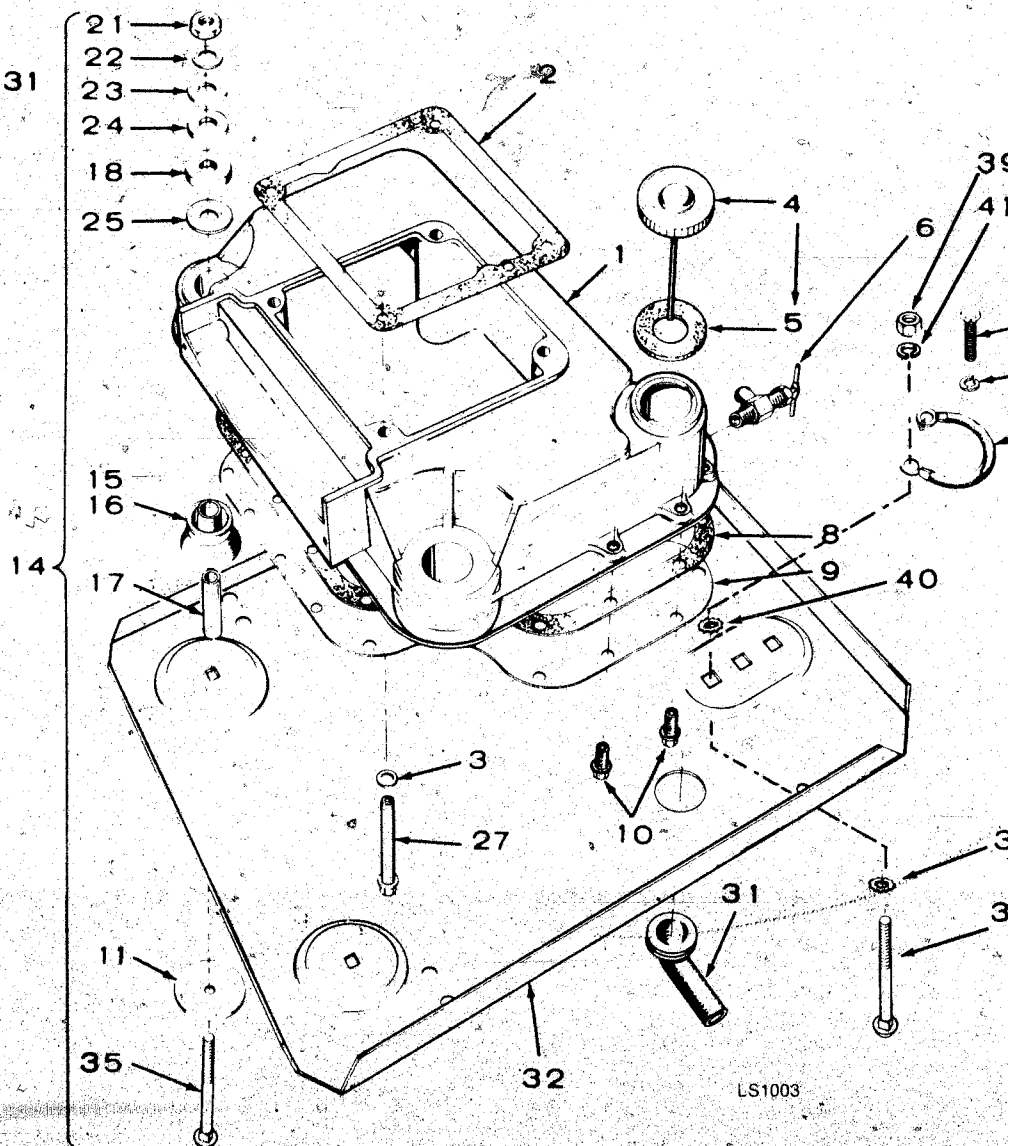
REF NO.	PART NO.	QTY USED	PART DESCRIPTION
12	526-0066	1	Washer, Flat - Copper (3/8")
13	801-0050	1	Screw, Cap - Hex Head (3/8-24 x 1")
14	120-0140	1	Spring, Valve - Oil By-Pass
15	120-0398	1	Valve, By-Pass - Oil
16	850-0040	2	Washer, Lock - Spring (1/4-20 x 1")
17	800-0007	2	Screw, Cap - Hex Head (1/4-20 x 1")
18	120-0491	1	Pump, Oil (Components Not Sold Separately)
19	120-0161	1	Gasket Kit, Pump - Oil Cup, Intake - Oil Pump (Includes Screw Pipe and Spec J and K)
20			Begin Spec M
	120-0400	1	
	120-0413	1	



Oil Base and Mounting Hardware



LS1031



LS1003

Oil Base and Mounting Hardware

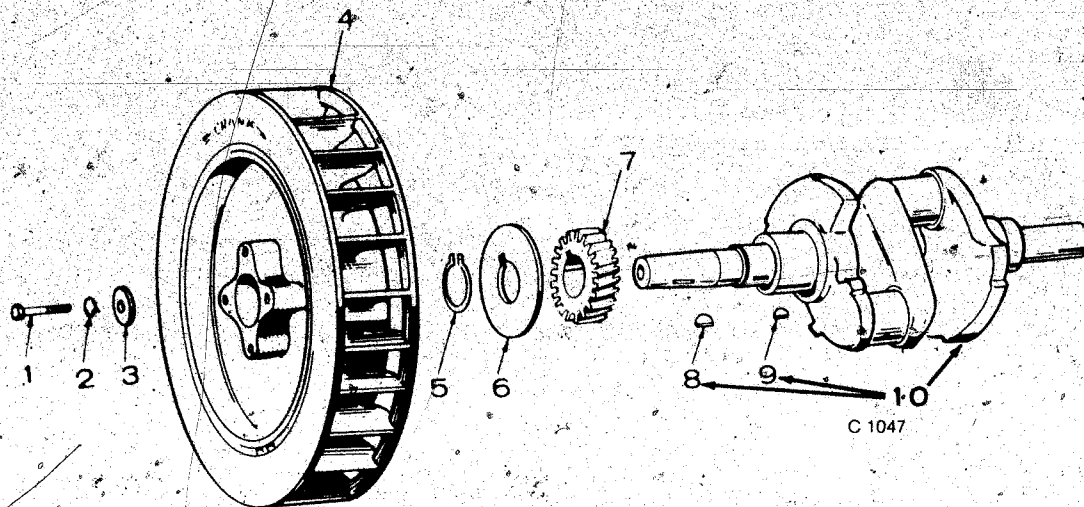
REF NO.	PART NO.	QTY USED	PART DESCRIPTION	REF NO.	PART NO.	QTY USED	PART DESCRIPTION
1	102-0801	1	Base, Oil	22	856-0012	3	#Washer, Lock - EIT (7/16")
	102-0957	1	Spec J and K				Spec J and K
			Begin Spec M (Includes				Begin Spec M
			Parts Marked *)				Engine End
2	102-1387	1	*Gasket, Base - Oil	850-0055		2	Generator End (Left Side)
3	526-0013	4	Washer, Flat (3/8")	856-0012		1	Generator End (Right Side)
4			Cap and Indicator, Fill - Oil	850-0055		1	#Washer, Flat (7/16")
	123-0489	1	Spec J and K				Spec J and K
	123-1400	1	Begin Spec M				Begin Spec M
5	123-0191	1	Gasket, Cap - Oil Fill	526-0014		3	Engine End
6	504-0092	1	Valve, Drain - Oil	526-0014		2	Generator End (Left Side)
7	505-0019	1	Reducer, Pipe - Spec J and K	526-0014		1	Generator End (Right Side)
8	102-1275	1	*Gasket, Mounting - Oil Pan -				#Washer, Flat (9/16")
			Begin Spec M				Spec J and K
9	102-0889	1	*Pan, Base - Oil - Begin	526-0198		6	Begin Spec M
			Spec M				Engine End
10	821-0018	20	*Screw, Cap - Hex Washer Head	526-0198		2	Generator End (Left Side)
			(1/4-20 x 5/8") - Begin	526-0198		1	Generator End (Right Side)
			Spec M				#Washer, Flat (1") Begin Spec
11	526-0038	1	#Washer, Flat	526-0286		1	Generator End (Left Side)
			Generator End, RH (5/8")	526-0286		1	Generator End (Right Side)
12	800-0047	1	Screw, Cap - Hex Head				Screw, Cap - Hex Head
			(3/8-16 x 5/8") Begin Spec M				Spec J and K
13	856-0010	1	Washer, Lock - EIT (3/8")	800-0051		4	(3/8-16 x 1-1/4")
			Begin Spec M	800-0064		4	Begin Spec M
14			Hardware Package, Mounting				(3/8-16 x 4-1/2")
			(Includes Parts Marked #)				Washer, Lock - Spring (3/8")
	402-0435	1	Spec J and K	28	850-0050	4	Strap, Ground
			Begin Spec M	29			Spec J and K
	402-0477	1	Engine End		337-0049	1	Begin Spec M
	402-0480	1	Generator End (Left Side)		337-2055	1	Screw, Tapping - Slotted He
	402-0480	1	Generator End (Right Side)	30	815-0350	1	(#10-32 x 3/8")
15			#Cushion, Vibration - Engine				Hose, Oil Drain - Optional
			End	31	122-0345	1	Plate, Mounting
				32			Spec J and K
	402-0283	2	Spec J and K				Standard
	402-0283	2	Begin Spec M		403-1219	1	Winnebago
16			#Cushion, Vibration -		403-1356	1	Begin Spec M
			Generator End				Standard
	402-0284	1	Spec J and K		403-1484	1	Winnebago
			Begin Spec M		403-1507	1	
	402-0283	1	Left Side	33	862-0001	1	Nut, Hex (1/4-20) -
	402-0283	1	Right Side				Spec J and K
17			#Spacer, Sleeve				Washer, Lock - EIT (5/16")
	402-0290	3	Spec J and K	34	856-0008	1	Spec J and K
			Begin Spec M				#Bolt, Carriage (7/16-14 x
	402-0290	2	Engine End	35			3-1/2") - Begin Spec M
	402-0290	1	Generator End (Left Side)		816-0206	2	Engine End
	402-0290	1	Generator End (Right Side)		816-0206	1	Generator End (Left Side)
18			#Snubber		816-0206	1	Generator End (Right Side)
	402-0282	3	Spec J and K	36	526-0038	2	#Washer, Flat - Engine End
			Begin Spec M				(5/8")
	402-0282	2	Engine End	37	816-0197	1	+Bolt, Carriage - Begin Spec
	402-0282	1	Generator End (Left Side)				(7/16-14 x 1-1/4")
	402-0282	1	Generator End (Right Side)	38	856-0016	1	+Washer, Lock - EIT - Begin
19	800-0082	3	#Screw, Cap - Hex Head				Spec M (5/8)
			(7/16-14 x 3-3/4")	39	862-0004	1	+Nut, Hex (7/16-14) - Begin
20	526-0195	3	#Washer, Flat (7/16")				Spec M
			Spec J and K	40	856-0012	1	+Washer, Lock - EIT (7/16")
21			#Nut, Hex (7/16-14)				Begin Spec M
	862-0004	3	Spec J and K	41	850-0055	1	+Washer, Lock (7/16") -
			Begin Spec M				Begin Spec M
	862-0004	2	Engine End				
	862-0004	1	Generator End (Left Side)				
	862-0004	1	Generator End (Right Side)				

* - Parts Included in Oil Base

- Parts Included in Hardware Mounting Package

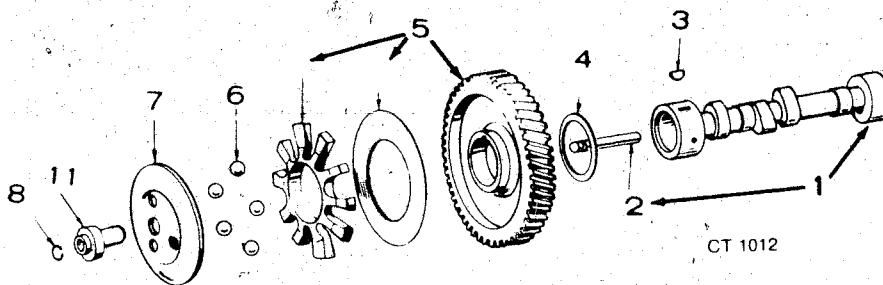
+ - Use With Ground Strap

Crankshaft and Flywheel



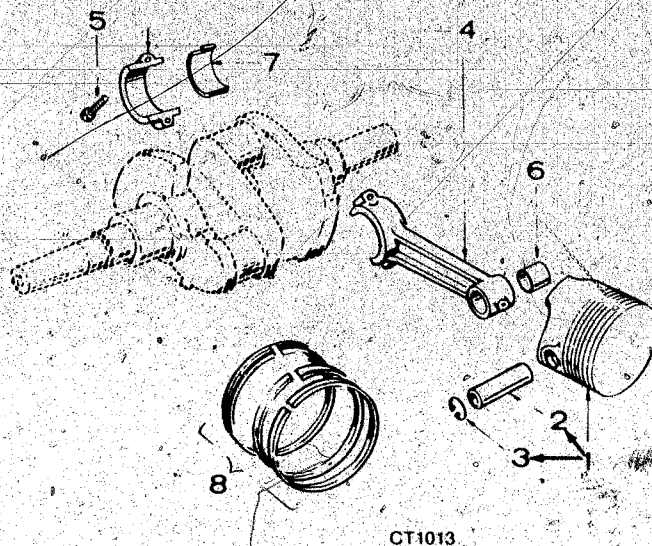
REF NO.	PART NO.	QTY USED	PART DESCRIPTION	REF NO.	PART NO.	QTY USED	PART DESCRIPTION
1	104-0170	1	Screw, Cap - Hex Head (Special)	6	104-0043	1	Washer, Gear (Special)
2	850-0055	1	Washer, Lock - Spring (7/16")	7	104-0032	1	Gear, Crankshaft
3	526-0262	1	Washer, Flat (7/16")	8	515-0263	1	Key Kit
4	134-4245	1	Flywheel	9	515-0001	1	Key, Woodruff
5	518-0014	1	Ring, Retaining	10	104-1314	1	Crankshaft (Includes Ke

Camshaft



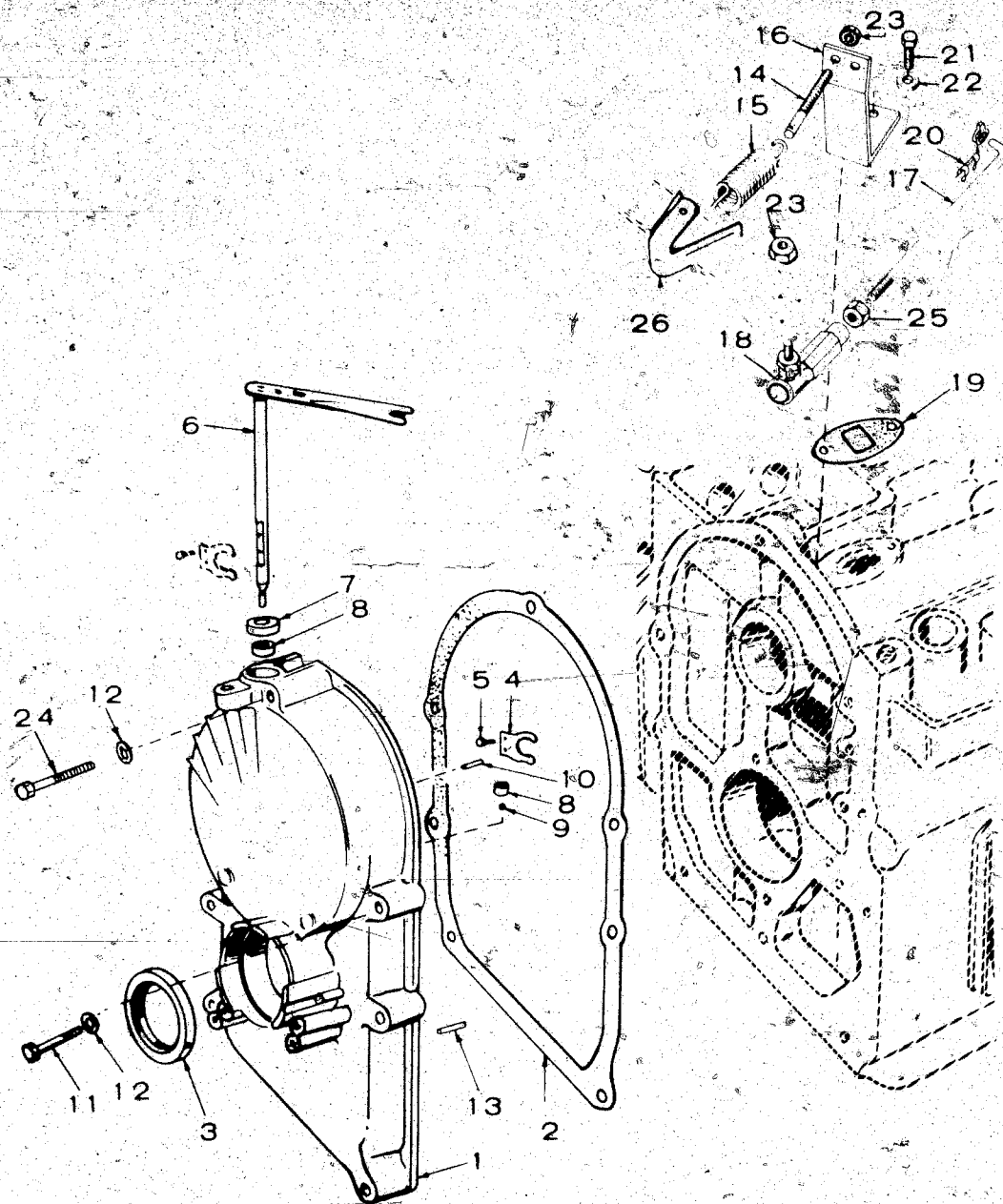
REF NO.	PART NO.	QTY USED	PART DESCRIPTION	REF NO.	PART NO.	QTY USED	PART DESCRIPTION
1	105-0638	1	Camshaft	6	510-0015	10	Ball, Fly - Governor
2	150-0075	1	Pin, Camshaft	7	150-1520	1	Cup, Governor
3	515-0001	1	Key, Gear - Camshaft	8	150-0078	1	Ring, Retaining
4	105-0541	1	Washer, Thrust	11	150-1519	1	Hub, Cup - Governor
5	105-0332	1	Gear, Camshaft (Includes Spacer and Plate)				

Piston and Rod



REF NO.	PART NO.	QTY USED	PART DESCRIPTION	REF NO.	PART NO.	QTY USED	PART DESCRIPTION
1			Piston and Pin (Includes Retaining Rings) Spec J through N	7			Bearing, Half - Connec Rod
	112-0180	2	Standard		114-0188	4	Standard
	112-0180-05	2	.005" Oversize		114-0188-02	4	.002" Undersize
	112-0180-10	2	.010" Oversize		114-0188-10	4	.010" Undersize
	112-0180-20	2	.020" Oversize		114-0188-20	4	.020" Undersize
	112-0180-30	2	.030" Oversize		114-0188-30	4	.030" Undersize
	112-0180-40	2	.040" Oversize	8			Ring Set, Piston
			Begin Spec P				Spec J through N
	112-0228	2	Standard		113-0165	2	Standard
	112-0228-05	2	.005" Oversize		113-0165-05	2	.005" Oversize
	112-0228-10	2	.010" Oversize		113-0165-10	2	.010" Oversize
	112-0228-20	2	.020" Oversize		113-0165-20	2	.020" Oversize
	112-0228-30	2	.030" Oversize		113-0165-30	2	.030" Oversize
	112-0228-40	2	.040" Oversize		113-0165-40	2	.040" Oversize
2	112-0112	2	Pin, Piston				Begin Spec P
3	518-0294	4	Ring, Retaining - Piston Pin		113-0203	2	Standard
4	114-0203	2	Rod, Connecting		113-0203-05	2	.005" Oversize
5	805-0010	4	Bolt, Place (5/16-24 x 1-1/4")		113-0203-10	2	.010" Oversize
6	114-0036	2	Bushing, Pin - Piston		113-0203-20	2	.020" Oversize
					113-0203-30	2	.030" Oversize
					113-0203-40	2	.040" Oversize

Gearcase and Governor

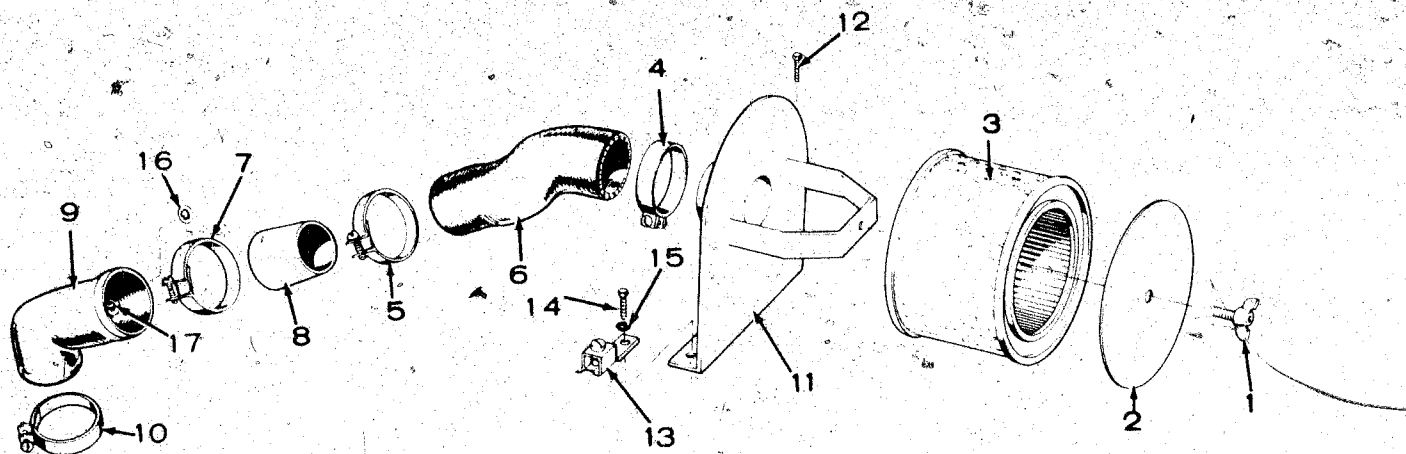


Gearcase and Governor

REF NO.	PART NO.	QTY USED	PART DESCRIPTION	REF NO.	PART NO.	QTY USED	PART DESCRIPTION
1	103-0667	1	Cover, Gear (Includes Parts Marked *)	16	150-1577	1	Bracket, Mounting - Governor
2	103-0810	1	Gasket, Mounting - Gearcase	17			Rod, Governor Arm to Carburetor
3	509-0040	1	*Seal, Oil		150-1478	1	Spec J
4	150-1187	1	*Yoke, Governor		150-0629	1	Begin Spec K
5	815-0046	2	*Screw, Machine - Pan Head (#8-32 x 3/8")	18	150-0639	1	Joint, Ball
6	150-1542	1	*Arm and Shaft, Governor	19	149-0003	1	Gasket, Mounting - Governor Bracket
7	509-0008	1	*Seal, Oil	20	518-0004	1	Clip, Retaining - Rod End
8	510-0013	2	*Bearing, Needle	21	800-0004	2	Screw, Cap - Hex Head Governor Bracket Mounting (1/4-20 x 5/8" Long)
9	510-0014	1	*Bearing, Ball - Governor Shaft				Washer, Flat (Copper) Governor Bracket Mounting (1/4")
10	516-0130	1	*Pin, Stop - Governor Cup	22	526-0063	2	Nut, Self-Locking (1/4-20 x 1-3/4")
11	800-0032	4	Screw, Cap - Hex Head Gearcase Mounting (5/16-18 x 1-3/4")	23	870-0131	1	Screw, Cap - Hex Head Gearcase Mounting (5/16-2-1/4")
12	526-0065	6	Washer, Flat (Copper) Gearcase Mounting (5/16")	24	800-0034	1	Nut, Hex (#10-32)
13	516-0141	2	Pin, Alignment - Gearcase	25	870-0053	1	*Clip, Sensitivity
14			Stud, Adjustment - Speed	26	150-0678	1	
	150-0796	1	Spec J				
	150-0096	1	Begin Spec K				
15			Spring, Governor				
	150-0098	1	Spec J				
	150-1612	1	Begin Spec K				

* - Parts Included in Gearcase.

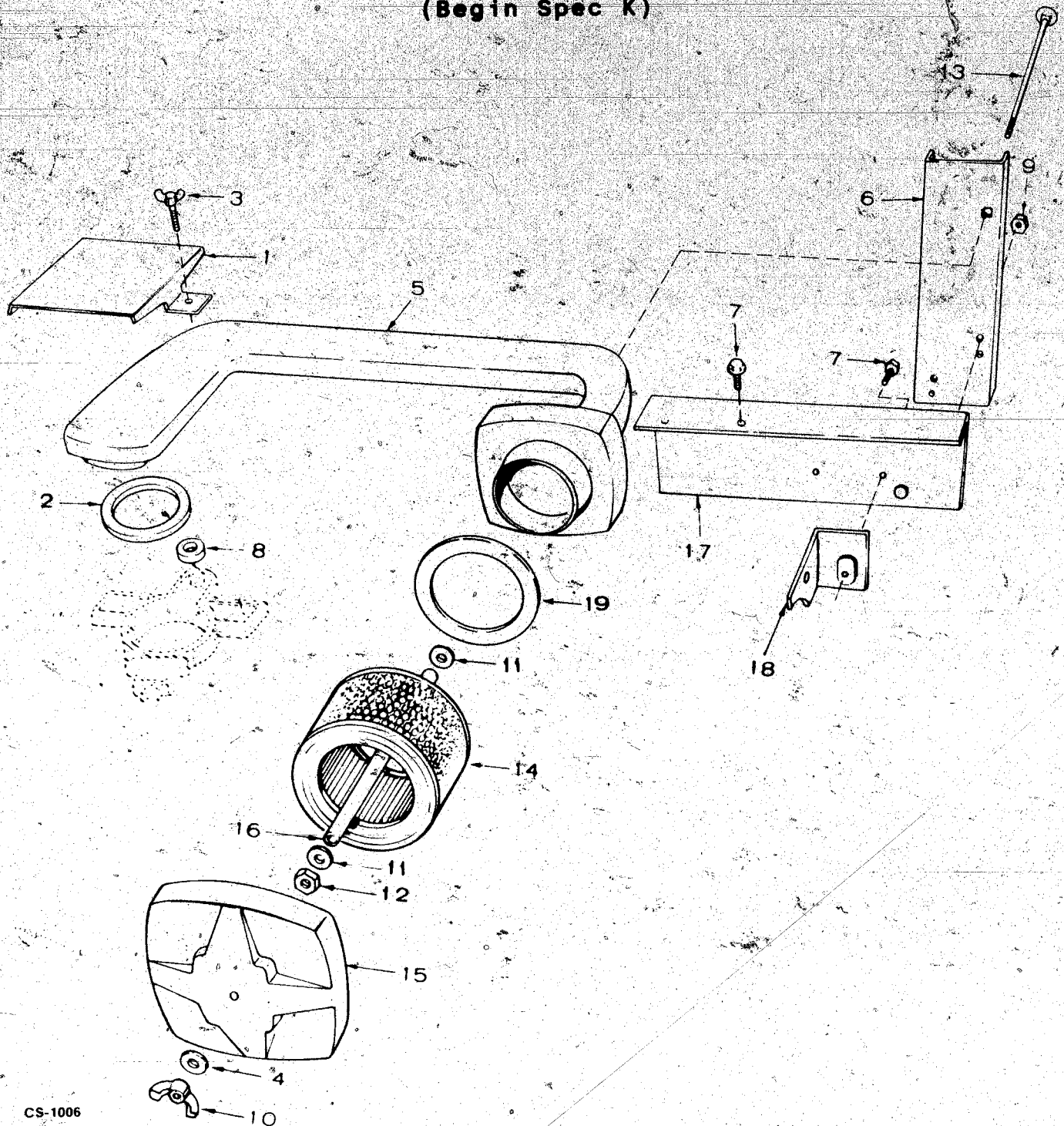
Air Cleaner (Spec J Only)



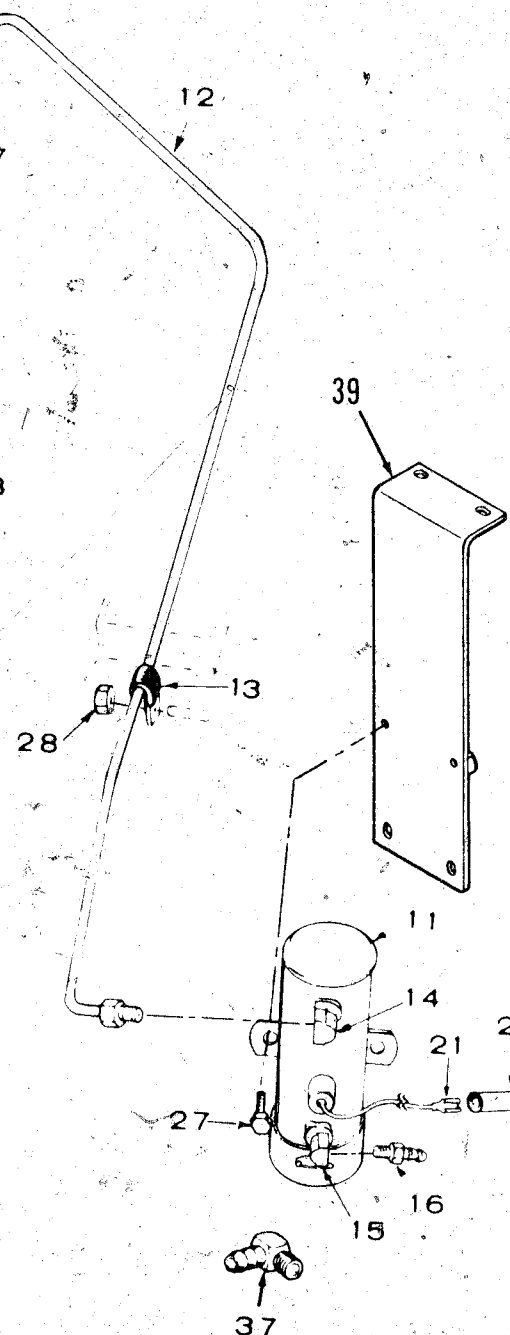
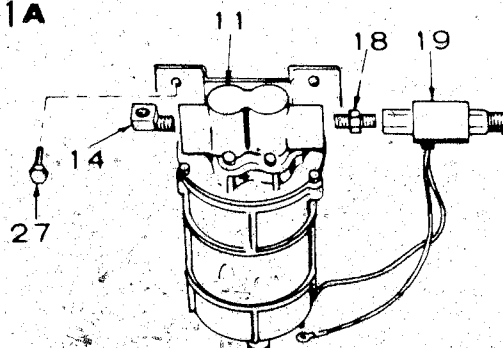
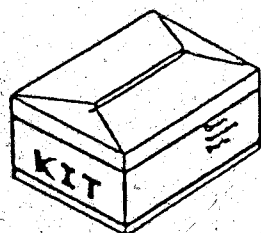
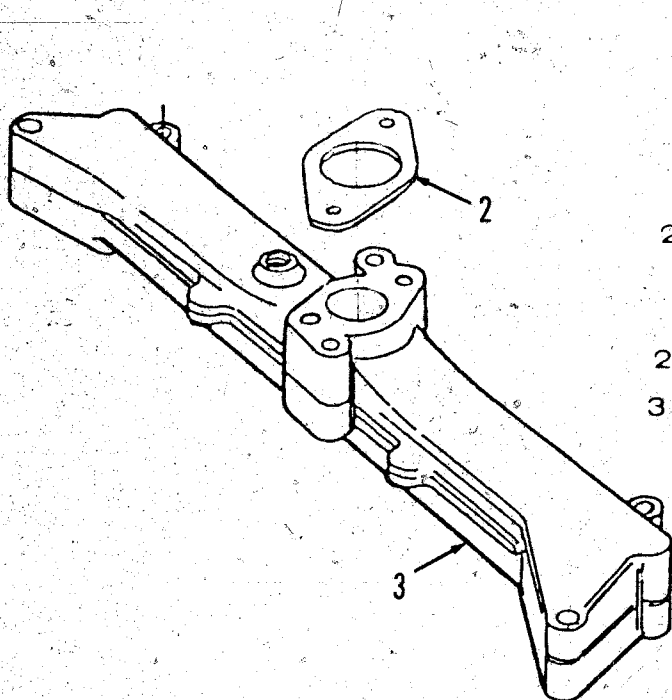
M1188

REF NO.	PART NO.	QTY USED	PART DESCRIPTION	REF NO.	PART NO.	QTY USED	PART DESCRIPTION
1	518-0056	1	Screw, Wing (#10-32 x 1/2")	11	140-1173	1	Bracket, Cleaner - Air
2	140-1153	1	Cover, Cleaner - Air	12	821-0009	1	Screw, Self Locking - Hex Head (1/4-20 x 3/8")
3	140-0495	1	Cartridge, Cleaner - Air	13	332-0142	1	Terminal, Lug - Ground
4	503-0004	1	Clamp, Hose - Air Cleaner	14	821-0010	1	Screw, Self Locking - Hex Head (1/4-20 x 1/2")
5	503-0311	1	Clamp, Hose - Air Cleaner	15	856-0006	1	Washer, Lock - External/Internal Tooth (1/4")
6	503-0802	1	Hose, Cleaner - Air	16	851-0011	1	Washer, Lock - Internal (1/4")
7	503-0274	1	Clamp, Hose - Sleeve to Adapter Mounting	17	123-0733	1	Adapter, Tube - Breather H
8	140-1240	1	Sleeve, Hose - Air Cleaner				
9	145-0504	1	Adapter, Inlet - Carburetor Air				
10	503-0107	1	Clamp, Mounting - Air Intake Adapter				

Air Cleaner (Begin Spec K)



REF NO.	PART NO.	QTY USED	PART DESCRIPTION	REF NO.	PART NO.	QTY USED	PART DESCRIPTION
1	140-1520	1	Clamp, Duct - Air	10	865-0019	1	Nut, Wing (1/4-20)
2	140-1502	1	Seal, Air Duct to Adapter	11	526-0158	2	Washer, Flat
3	518-0390	2	Screw, Wing (1/4-20 x 3/4")	12	870-0212	1	Nut, Hex - Locking (1/4-20)
4	526-0021	1	Washer, Flat (1/4")	13	816-0070	1	Bolt, Carriage (1/4-20 x 6-1/2")
5	140-1503	1	Duct, Cleaner - Air	14	140-0495	1	Element, Cleaner - Air
6	140-1531	1	Bracket, Support - Air Duct	15	140-1504	1	Cover, Cleaner - Air
7	821-0009	6	Screw, Cap - Hex Head Locking (1/4-20 x 3/8")	16	140-1522	1	Spacer, Intake - Air
8	140-1521	1	Seal, Air Duct to Breather Port	17	140-1529	1	Bracket, Duct - Air Intake
9	870-0212	2	Nut, Hex - Locking (1/4-20)	18	140-1528	1	Brace, Duct - Air Intake
				19	140-1533	2	Seal, Element - Air Clear



Fuel System (Gasoline)

REF NO.	PART NO.	QTY USED	PART DESCRIPTION	REF NO.	PART NO.	QTY USED	PART DESCRIPTION
1			Carburetor, Gasoline (Includes Mounting Gasket)	19	307-1457	1	Valve, Solenoid - Spec
	146-0307	1	* Spec J	20	332-1506	1	Connector, Lead - Fuel
	146-0308	1	@ Spec K Through Spec P - Through 1984				Begin Spec K
	146-0419	1	# Spec P - Begin 1985 Kits	21			Terminal, Lead - Fuel P
1A			*@ Spec J through P 1984)		332-0529	1	Begin Spec K
	146-0290	1	Repair		332-1993	1	Begin Spec R
	146-0265	1	Choke Shaft	22	509-0145	1	Seal, O-Ring - Begin Sp
	146-0220	1	Gasket	23			Screw, Cap - Hex Head
	146-0289	1	Valve and Seat		800-0538	4	Spec J (3/8-16 x 1-1/
			# Spec P 1985		800-0058	4	Begin Spec K (3/8-16
	146-0356	1	Repair	24	800-0050	4	Washer, Lock - Spring (
	146-0417	1	Choke Shaft	25			Screw, Cap - Hex Head
	146-0326	1	Gasket		800-0036	2	Spec J (5/16-18 x 2-3
	146-0329	1	Valve and Seat		800-0035	2	Begin Spec K (5/16-18
2	154-0733	1	Gasket, Mounting - Carburetor	26	850-0045	2	Washer, Lock - Spring (
3			Manifold, Intake	27			Screw, Cap - Hex Washer
	154-1861	1	Spec J		821-0009	2	Spec J and Spec R
	154-2292	1	Begin Spec K		821-0008	2	(1/4-20 x 3/8")
4	154-2219	2	Gasket, Mounting - Intake Manifold	28	862-0015	1	Begin Spec K (1/4-20
5	140-1492	1	Adapter, Duct - Air - Begin Spec K	29	804-0017	3	Nut, Hex (5/16-18)
6			Adapter, Choke	30	815-0359	2	Screw, Cap - Socket Hea
	153-0489	1	Spec J	31	815-0285	2	(#10-32 x 1/2")
	153-0499	1	Begin Spec K	32	526-0062	2	Screw, Tapping - Hex wi
7	153-0058	1	Housing, Choke	33	815-0110	1	ET (#10-32 x 7/8")
8	153-0017	1	Element, Choke - Bi-Metal				Screw, Machine - Round
9	153-0114	1	Element & Cover, Choke	34	850-0030	1	with ET (#8-32 x 5/16"
10	332-0527	1	Terminal, Lug	35	526-0030	4	Washer, Flat - Brass (#
11	149-1828	1	Pump, Fuel - Electric	36	526-0022	1	Washer, Flat (3/8")
12			Line, Fuel Pump to Carburetor	37	502-0313	1	Washer, Flat (5/16")
	149-1417	1	Spec J				Elbow, Adapter (90°) -
	149-1531	1	Begin Spec K	38	526-0115	2	Begin Spec M
	149-2211	1	Begin Spec R	39	149-2203	1	Washer, Flat (5/16")
13	518-0350	1	Clamp, Loop - Fuel Line Insulated				Bracket, Fuel Pump - Be
14	502-0002	1	Elbow, Male - Inverted				Spec R
15			Elbow, Street - 90°				
	502-0020	1	Begin Spec K				
	502-0313	1	Begin Spec R				
16	502-0395	1	Connector, Hose - Spec K				
17	502-0003	1	Connector, Male - Inverted				
18	502-0082	1	Nipple, Pipe - Spec J Only				

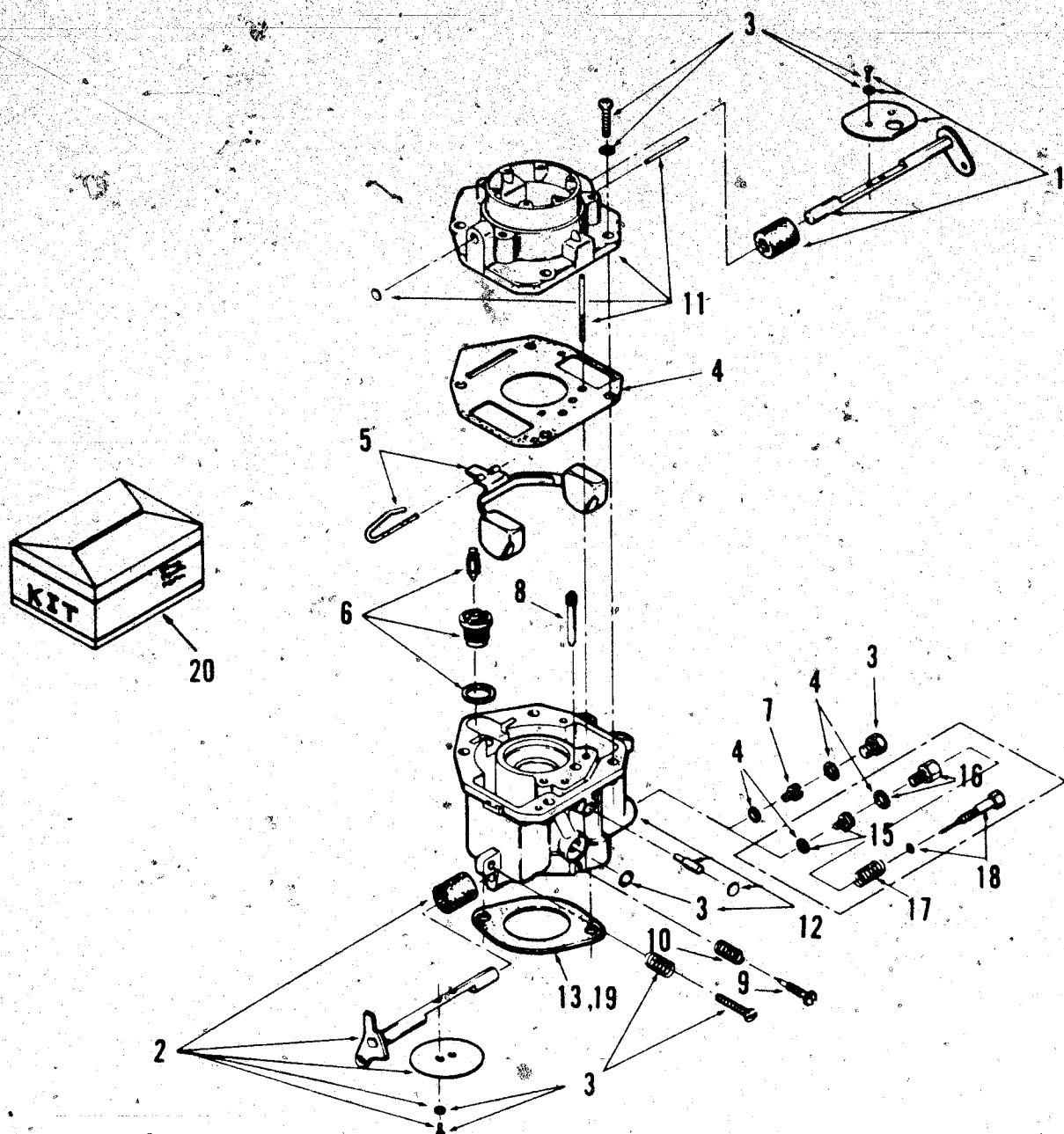
NOTE: Identify Carburetors and Kits as follow

* 146-0307 Manufactured by Walbro, has LUA-3
on base

@ 146-0308 Manufactured by Walbro, has LUA-7
on base

146-0419 Made in Japan, has 146-0410 on Bo

Carburetor Components (Gasoline) Nikki

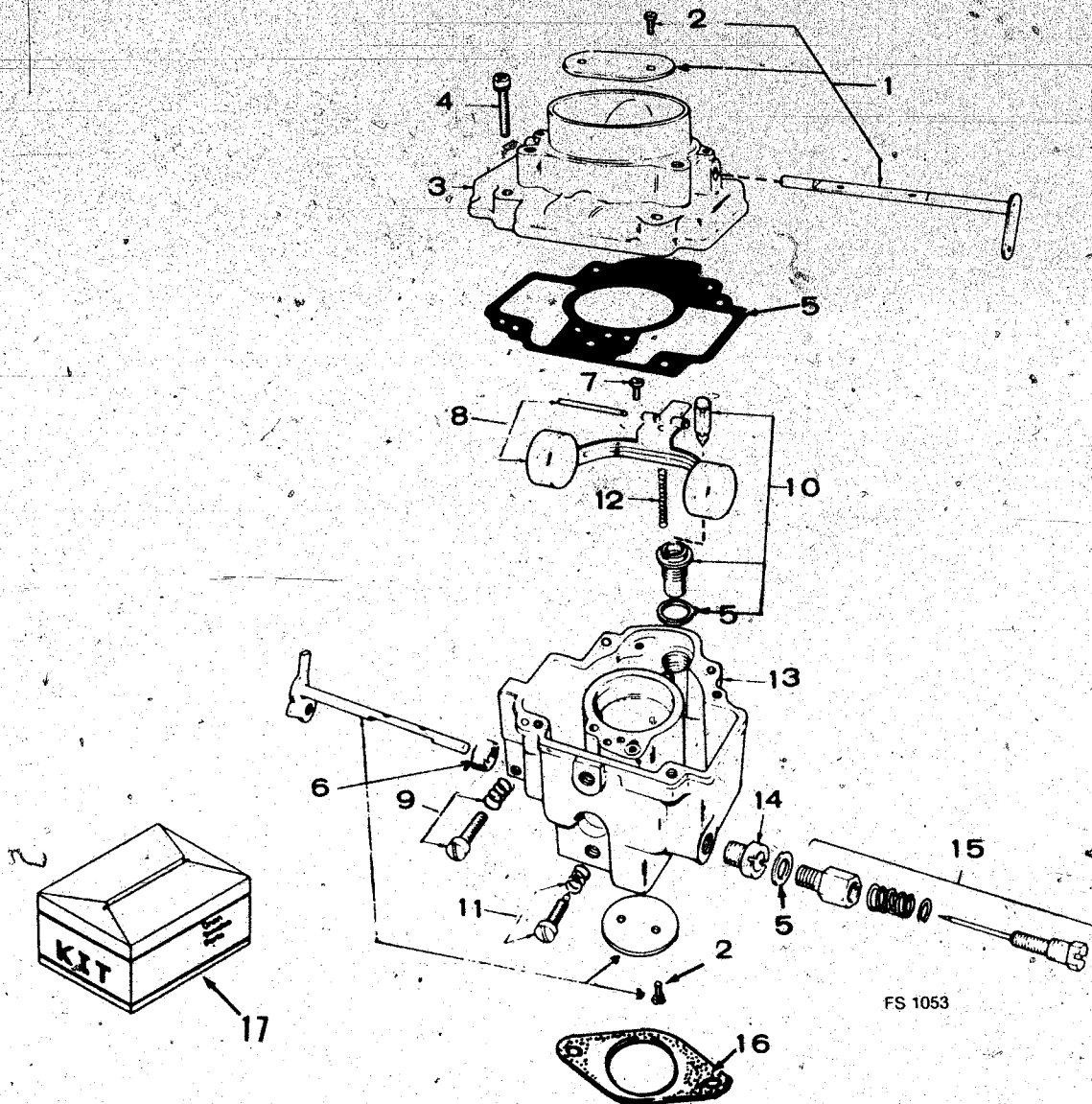


FS-1440

REF NO.	PART NO.	QTY USED	PART DESCRIPTION	REF NO.	PART NO.	QTY USED	PART DESCRIPTION
	146-0419	1	Carburetor, Complete (Includes Mounting Gasket)	11		1	Intake, Air (Not Sold Separately)
1	146-0417	1	Kit, Shaft - Choke	12		1	Body (Not Sold Separately)
2	146-0418	1	Kit, Shaft - Throttle	13	154-0733	2	*Gasket, Mounting - Carbur
3	146-0322	1	*Kit, Screw and Plug	15	146-0343	1	Jet, Power (Includes Gask
4	146-0326	1	*Kit, Gasket	16	146-0340	1	Retainer, Needle - Power (Includes Gasket)
5	146-0325	1	Kit, Float	17	146-0341	1	Spring, Needle - Power
6	146-0329	1	*Kit, Valve and Seat	18	146-0342	1	Needle, Power - Complete
7	146-0343	1	Jet, Power	19	145-0438	1	*Gasket, Mounting - Carbur
8	146-0420	1	Jet, Idle	20	146-0356	1	Kit, Repair (Includes Par Marked *)
9	146-0335	1	*Needle, Adjusting - Idle				
10	146-0331	1	*Spring, Needle - Idle Adjusting				

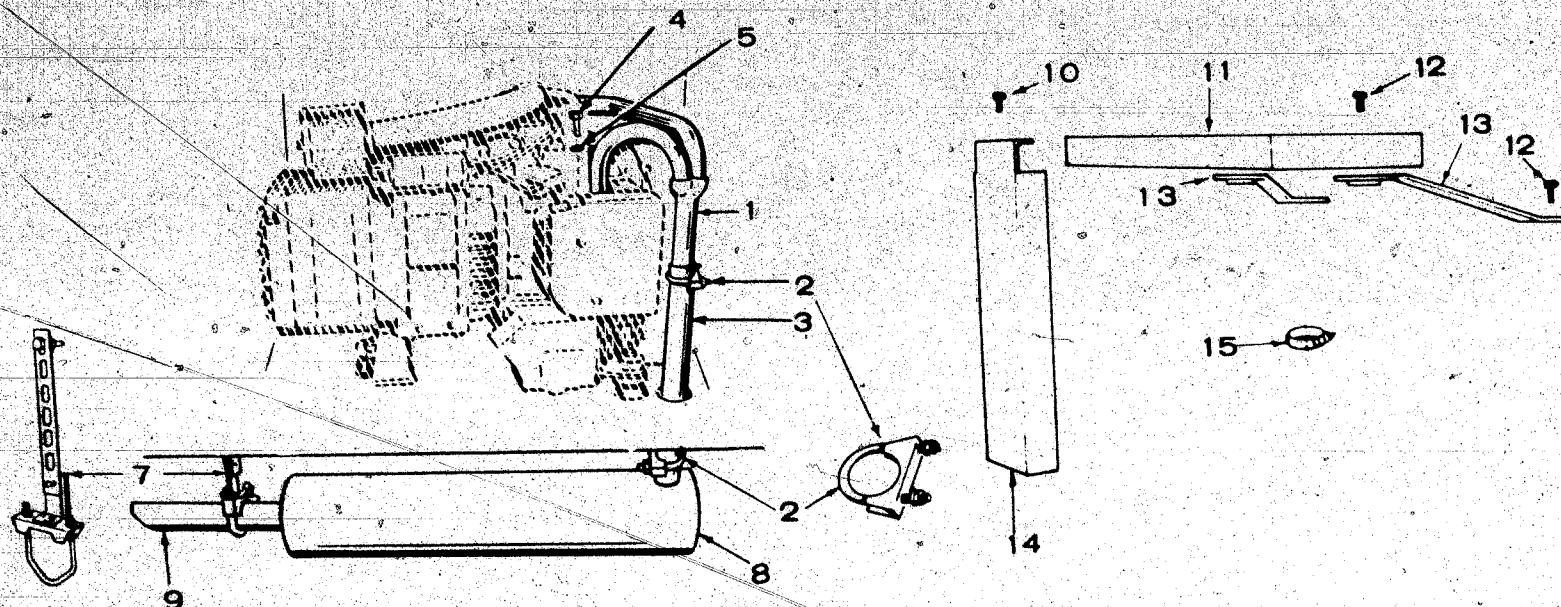
* - Parts Included in 146-0356 Repair Kit.

Carburetor Components (Adjustable Main Jet - Gasoline)



REF NO.	PART NO.	QTY USED	PART DESCRIPTION	REF NO.	PART NO.	QTY USED	PART DESCRIPTION
			Carburetor, Complete (Includes Mounting Gasket)	7	146-0222	1	Screw, Pin - Lever
	146-0307	1	Spec J	8	146-0262	1	Kit, Float
	146-0308	1	Begin Spec K	9	146-0261	1	Kit, Screw - Idle Speed Adjusting
1	146-0264	1	Kit, Shaft - Choke Spec J	10	146-0289	1	Kit, Valve and Seat
	146-0265	1	Begin Spec K	11	146-0209	1	Kit, Needle - Idle
2	146-0142	4	Screw, Mounting - Valve	12	146-0208	1	Spring, Buoyancy
3		1	Intake, Air (Not Sold Separately)	13		1	Body (Not Sold Separately)
4	146-0247	4	Screw, Body to Intake	14	146-0238	1	Spec J
5	146-0220	1	Kit, Gasket		146-0243	1	Begin Spec K
6			Kit, Shaft - Throttle.	15	146-0248	1	Kit, Needle - Power
	146-0268	1	Spec J	16	154-0733	1	Gasket, Mounting - Carbur
	146-0267	1	Begin Spec K	17	146-0290	1	Kit, Repair

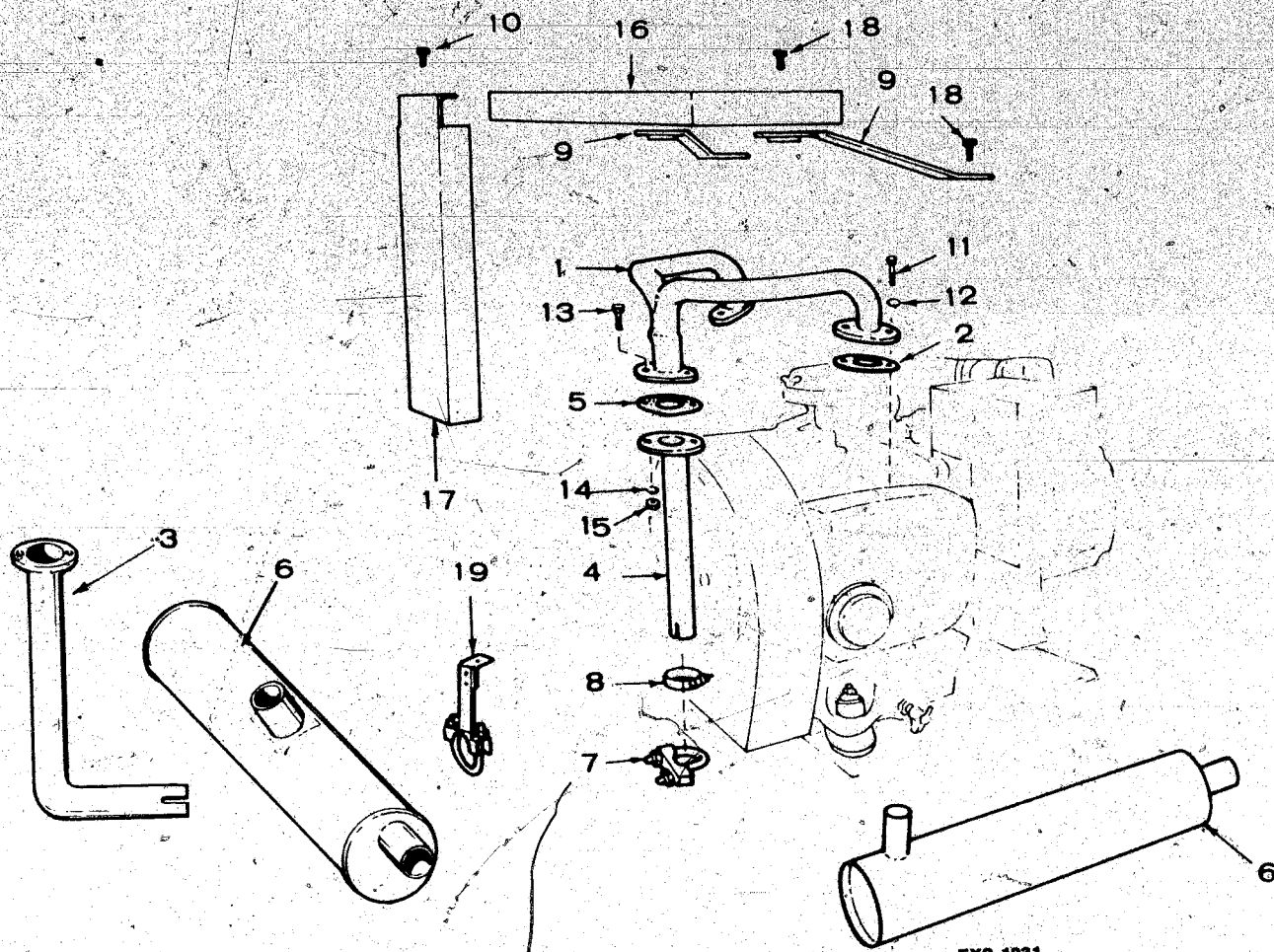
Exhaust System (Spec J)



REF NO.	PART NO.	QTY USED	PART DESCRIPTION	REF NO.	PART NO.	QTY USED	PART DESCRIPTION
1	154-1864	1	Manifold, Exhaust	10	800-0034	2	*Screw, Cap - Hex Head (5/16-18 x 3/4") - Opti
2	155-1239	2	Clamp, Muffler - Optional	11	154-1888	1	*Shield, Heat - Optional
3	154-1578	1	Tube, Exhaust - Optional	12	821-0010	3	*Screw, Cap - Hex Head (1/4-20 x 1/2") - Optio
4	800-0512	4	Screw, Cap - Hex Head (5/16-18 x 1")	13	154-1887	2	*Bracket, Mounting - Heat Shield (Optional)
5	850-0045	4	Washer, Lock - Spring (5/16")	14	154-1915	1	*Shield, Heat - Optional
	154-2747	2	Gasket, Manifold - Exhaust (Not Shown)	15	503-0107	1	*Clamp, Shield to Exhaust Tube - Optional
7	155-1234	1	Bracket, Muffler Hanger - Optional				
8	155-1222	1	Muffler, Optional				
9	155-1235	1	Tube, Exhaust - Optional				

* - Parts are for UL Listed and CSA Certified S

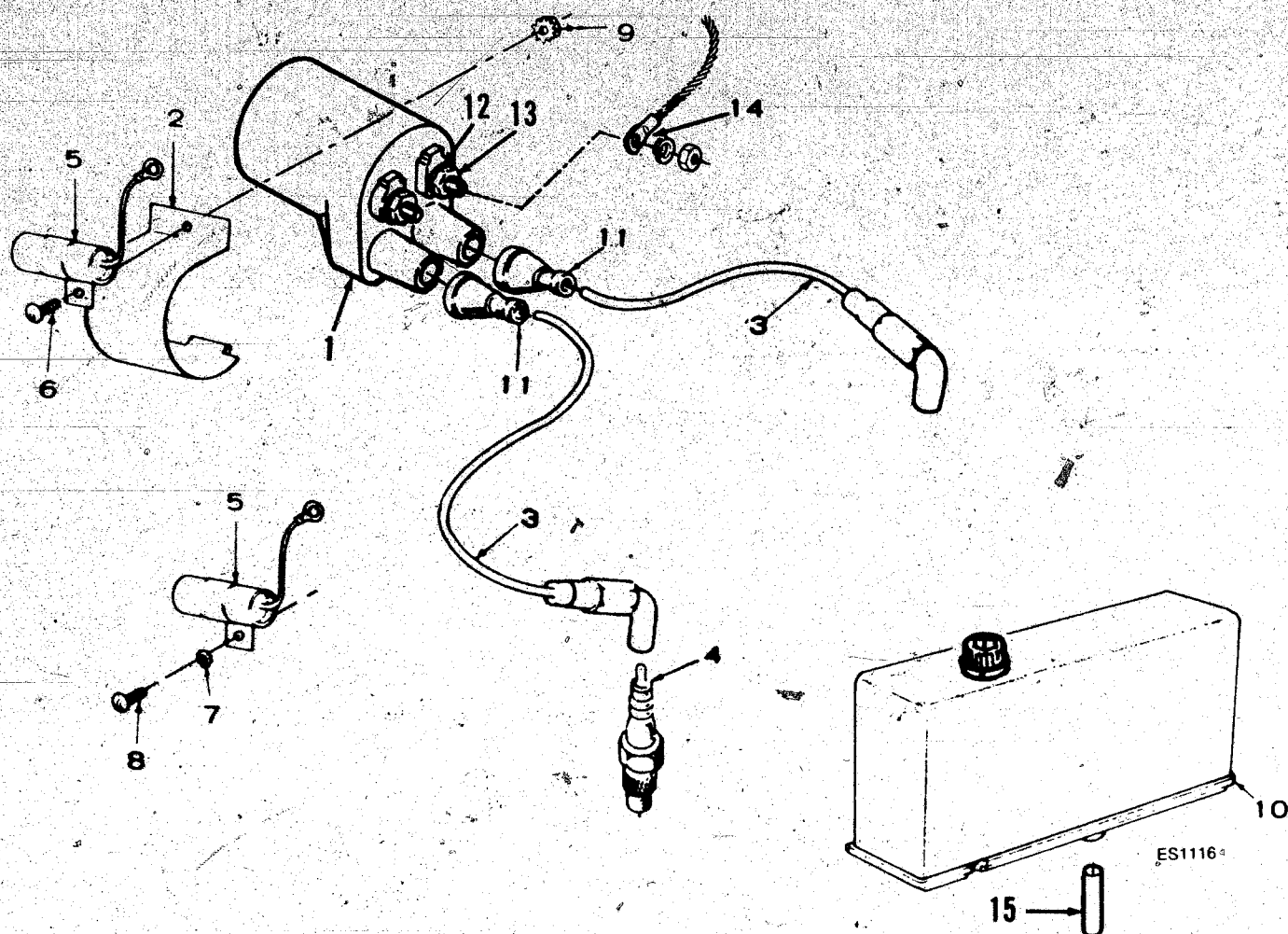
Exhaust System (Begin Spec K)



EXS-1031

REF NO.	PART NO.	QTY USED	PART DESCRIPTION	REF NO.	PART NO.	QTY USED	PART DESCRIPTION
1	154-1967	1	Manifold, Exhaust	10	800-0034	2	Screw, Cap - Hex Head
	154-2426	1	Prior to 6/83				(5/16-18 x 3/4") - Optic
			Begin 6/83 (Includes Heat Shield)	11	800-0512	4	Screw, Cap - Hex Head
2	154-2747	2	Gasket, Mounting - Exhaust Manifold				(5/16-18 x 1")
3			Tube, Exhaust (90° Bend) -	12	850-0045	4	Washer, Lock - Spring (5/
			Begin Spec M	13	800-0030	2	Screw, Cap - Hex Head
	154-2226	1	4" Long				(5/16-18 x 1-1/4") - Opt
	154-2554	1	18" Long	14	850-0045	2	Washer, Lock - Spring (5/
4			Tube, Exhaust - Optional				- Optional
	154-1917	1	Spec K	15	862-0015	2	Nut, Hex (5/16-18) - Opt
	154-2167	1	Begin Spec M				Shield, Heat (Manifold) -
5	154-2542	1	Gasket, Exhaust Tube -	16			Optional
			Optional		154-1972	1	Prior to 6/83
6			Muffler, Optional		154-2419	1	Begin 7/83
	155-1258	1	End Inlet				Shield, Heat - Exhaust T
	155-1910	1	Center Inlet				Optional
7	155-1239	1	Clamp, Muffler - Optional		154-1980	1	Spec K
8	503-0107	1	Clamp, Shield to Exhaust		154-2146	1	Begin Spec M
			Tube - Optional	18	821-0010	3	Screw, Cap - Hex Head
9			Bracket, Mounting - Heat				(1/4-20 x 1/2") - Optio
			Shield (Optional)	19	155-1234	1	Bracket, Hanger - Muffler
	154-1968	1	Right Side				(Optional)
	154-1969	1	Left Side				

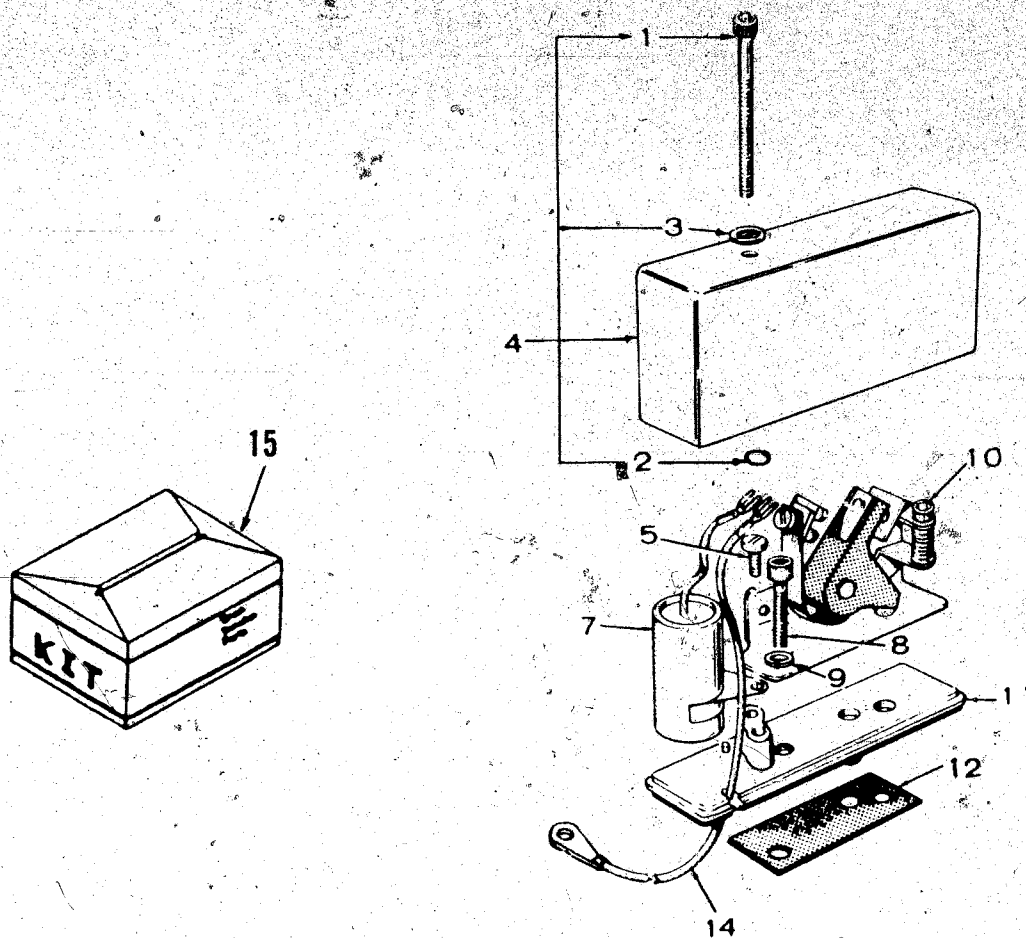
Ignition System



REF NO.	PART NO.	QTY USED	PART DESCRIPTION	REF NO.	PART NO.	QTY USED	PART DESCRIPTION
1	166-0772	1	Coil, Ignition	9	870-0131	1	Nut, Hex (#10-32) (Coil Bracket Mounting and Condenser)
2	166-0588	1	Clamp, Mounting - Ignition Coil	10	160-1303	1	Box, Breaker - Complete (See Separate Page for Components)
3	167-1602	2	Lead, Plug - Spark	11	160-0558	2	Nipple, Cable - Spark P
4	167-0247	2	Spec J	12	850-2005	2	*Washer, Flat (M5)
	167-0292	2	Spec K through Spec N	13	166-0554	2	*Nut, Hex (M5)
	167-0263	2	Begin Spec P	14	166-0702	1	Kit, Lead - Replacement (Includes Parts Marked
5	312-0017	1	Condenser, Ignition (.5 MFD)	15	160-1151	1	Plunger
6	821-0004	1	Screw, Cap - Hex Washer Head (#10-32 x 5/16")				
7	856-0003	1	Washer, Lock - External/Internal Tooth* (Condenser Mounting (#10) Spec J				
8	815-0350	1	Screw, Tapping - Hex Washer Head - Condenser Mounting (#10-32 x 3/8") - Spec J				

* - Parts Included in Lead Replacement Kit.

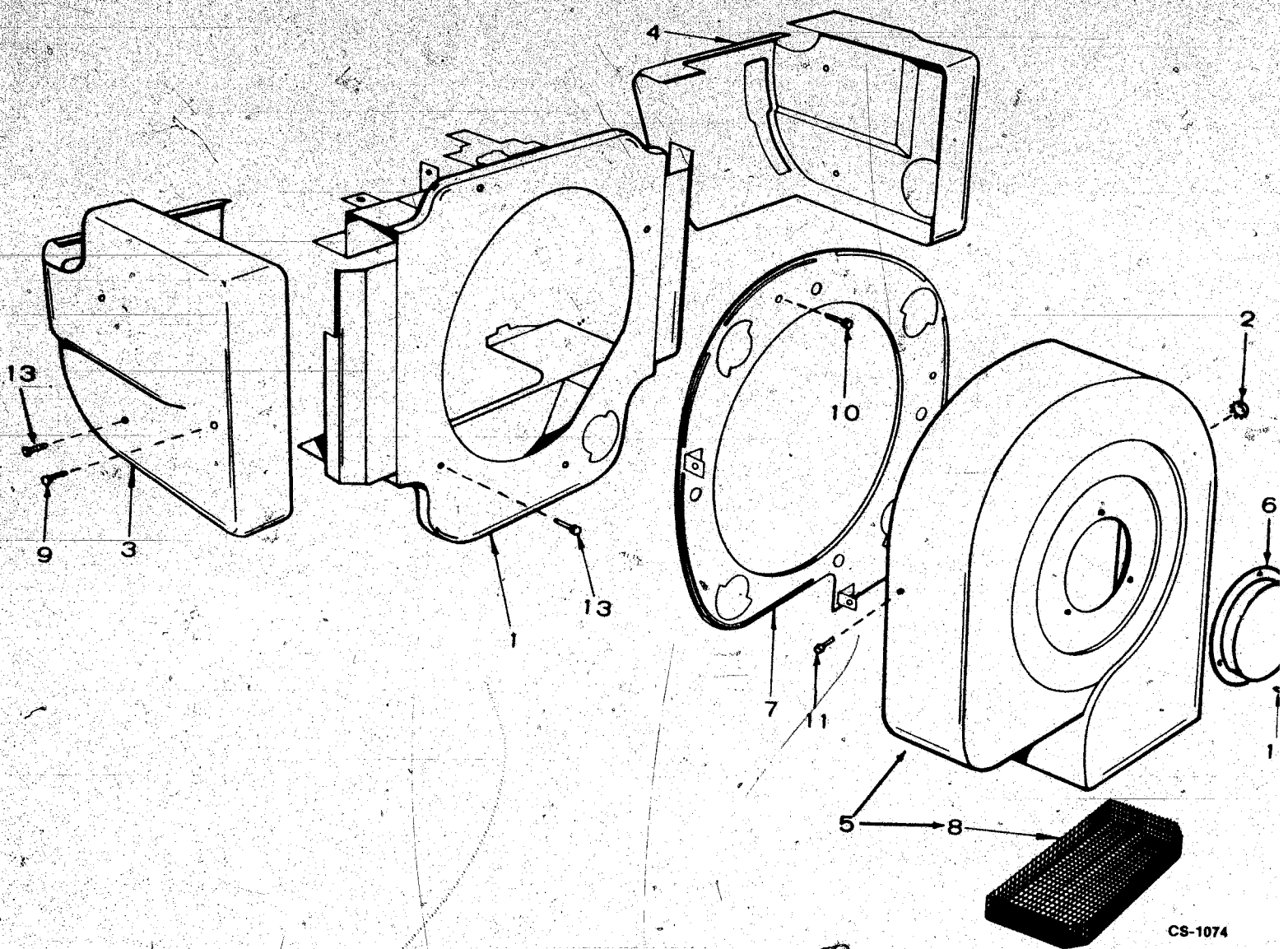
Breaker Box



REF NO.	PART NO.	QTY USED	PART DESCRIPTION	REF NO.	PART NO.	QTY USED	PART DESCRIPTION
	160-1303	1	Breaker Box (Includes Parts Marked *)	8	802-0034	2	*Screw, Cap - Socket Head (1/4-20 x 3/4")
1	802-0022	1	*Screw, Cap - Socket Head (#10-24 x 1-1/2")	9	850-0040	2	*Washer, Lock (1/4")
2	509-0065	1	*Retainer, "O" Ring	10	160-1183	1	*Point Set, Breaker
3	526-0008	1	*Washer, Flat (#10)	11	160-1219	1	*Base, Breaker
4	160-1285	1	*Cover, Box - Breaker	12	160-1368	1	*Gasket, Box - Breaker
5	815-0358	1	*Screw, Cap - Slotted (#8-32 x 5/16")	14	166-0702	1	Lead, Breaker Box to Coil
7	312-0246	1	*Condenser	15	160-1311	1	Kit, Tune Up (Includes Po and Condenser)

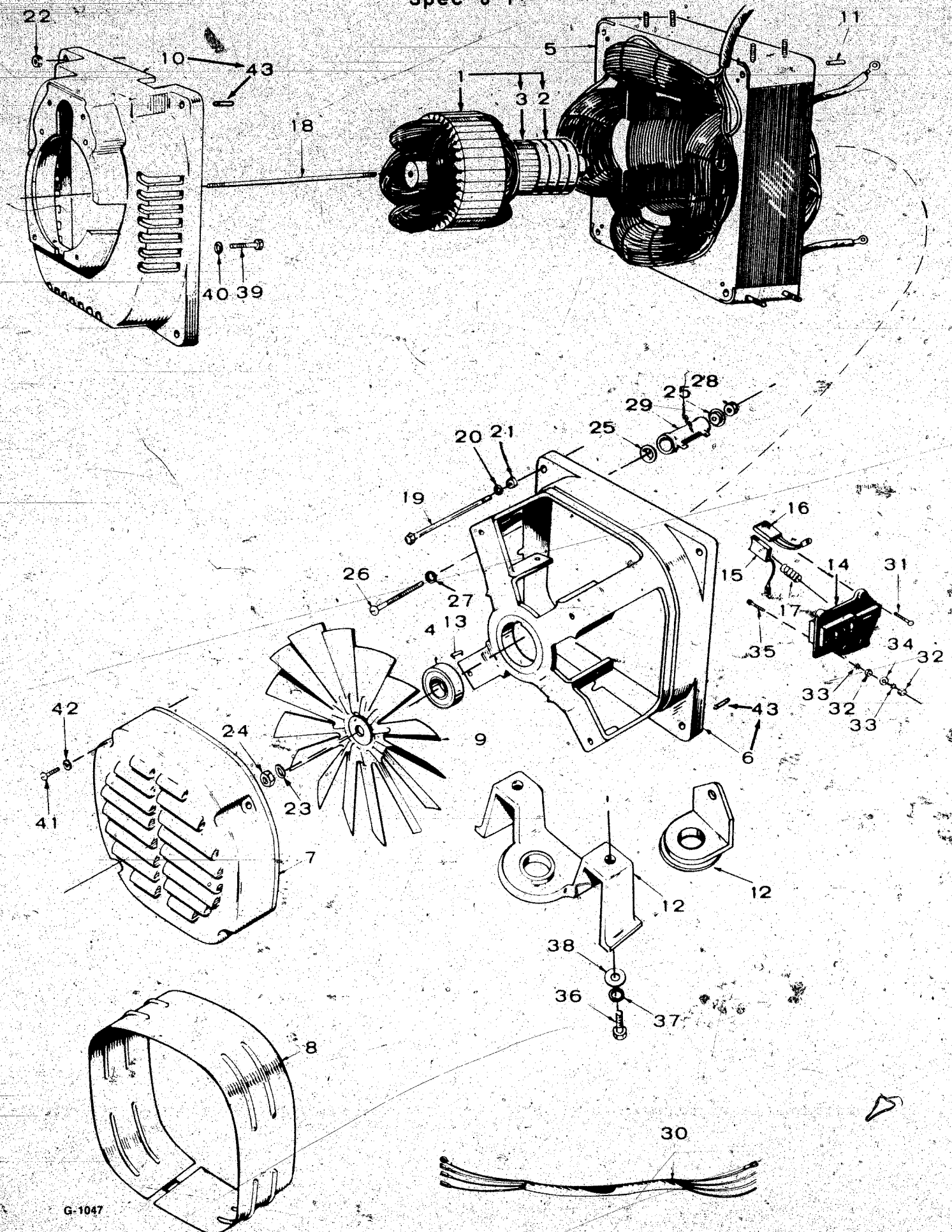
* - Parts Included in 160-1303 Breaker Box.

Air Housing



REF NO.	PART NO.	QTY USED	PART DESCRIPTION	REF NO.	PART NO.	QTY USED	PART DESCRIPTION
1	134-3312	1	Housing, Blower	8	134-2763		Guard, Scroll
	134-4095	1	Spec J through N		134-4316		Wire Mesh (Prior to 6/83)
2	517-0021	1	Begin Spec P				All Wire (Begin 6/83)
3			Plug, Button	9	821-0010	2	Screw, Self-Locking - Hex Head - Cylinder Air Hous Mounting (1/4-20 x 1/2")
	134-2755	1	Housing, Air - Cylinder (Left Side)	10	821-0010	4	Screw, Self-Locking - Hex Head - Scroll Backplate Mounting (1/4-20 x 1/2")
	134-3617	1	Spec J through N	11	821-0010	5	Screw, Cap - Hex Washer H (1/4-20 x 1/2")
4			Begin Spec P	12	821-0009	3	Screw, Self-Locking - Hex Washer Head - Scroll Cov Mounting (1/4-20 x 3/8")
	134-2752	1	Housing, Air - Cylinder (Right Side)	13	815-0261	6	Screw, Self-Tapping - Hex Head - Cylinder Air Hous Mounting (1/4-20 x 7/16")
	134-3618	1	Spec J through N				
5	134-2761	1	Begin Spec P				
6			Scroll, Air (Includes Wire Mesh Guard)				
7	134-3119	1	Scroll, Air (Includes Wire Mesh Guard)				
	134-2747	1	Backplate, Scroll				

Generator
Spec J-P



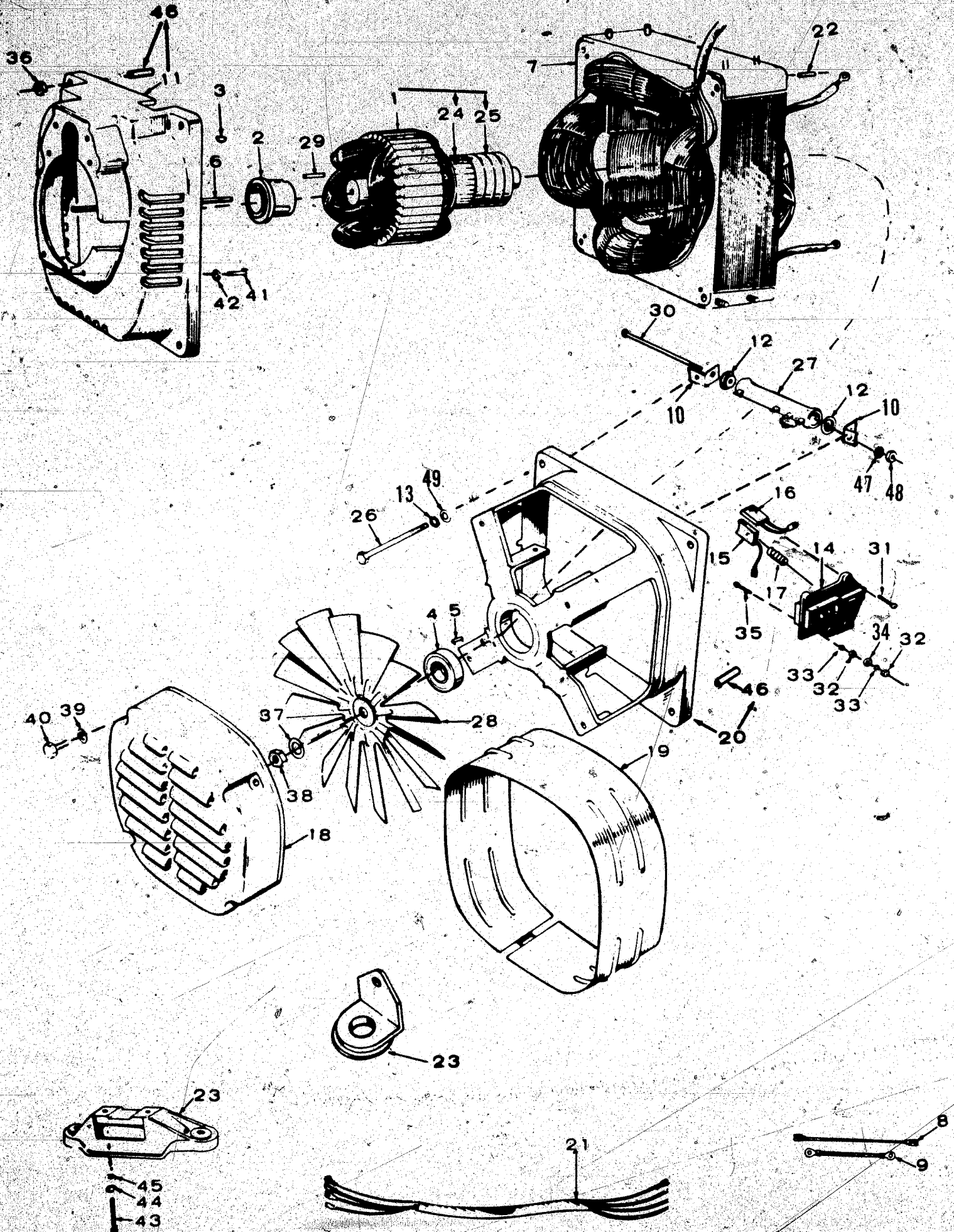
Generator Spec J-P

REF NO.	PART NO.	QTY USED	PART DESCRIPTION	REF NO.	PART NO.	QTY USED	PART DESCRIPTION
1			Armature, Generator (Includes Parts Marked *)	22	862-0015	4	Nut, Hex (5/16-18)
	201-2503	1	60 Hertz	23	850-0055	1	Washer, Lock - Spring (7/16-20)
	201-2506	1	50 Hertz	24	870-0203	1	Nut, Hex (7/16-20)
	201-2508	1	Begin Spec R - 60 Hertz, 3 Phase	25	304-0014	1	Washer, Centering (7/32 x 9/16")
2	204-0110	1	*Ring, Collector - Generator	26	812-0092	1	Screw, Machine - Round Head (#8-32 x 2-3/4")
3	203-0152	1	*Commutator, Generator	27	850-0025	1	Washer, Lock - Spring (#8-32)
4	510-0047	1	Bearing, Ball	28	860-0008	1	Nut, Hex (#8-32)
5	220-1816	1	Stator, Generator	29	353-0060	1	Resistor, Fixed (7.5 Ohm, 25 Watt)
6	211-0364	1	Ball, End - Generator (Includes 4 Alignment Pins)	30			Harness, Wiring
7	232-2107	1	Cover, Generator		338-0946	1	Spec J
8	234-0362	1	Wrapper, Generator		338-1099	1	Begin Spec K
9	205-0090	1	Fan, Generator		338-0947	1	Begin Spec R - 3 Phase 60 Hertz
10	231-0164	1	Adapter, Generator to Engine (Includes 4 Alignment Pins)	31	815-0359	15	Screw, Tapping - Hex Head (#10-32 x 7/8" Lg)
11	516-0182	8	Pin, Straight - Headless (1/4 Dia. x 3/4")	32	871-0010	8	†Nut, Hex - Brass (#10-32)
12			Support, Generator	33	853-0008	8	†Washer, Lock - External
	232-2619	1	Spec J and K	34	526-0049	4	†Washer, Flat - Brass (#10-32)
	402-0475	2	Begin Spec M	35	815-0341	4	†Screw, Machine - Hex Head Brass (#10-32 x 1")
13	232-0596	1	Clip, Retaining - Bearing	36	800-0051	2	Screw, Cap - Hex Head (3/8-16 x 1-1/4")
14			Block, Brush (Includes Parts Marked †)	37	850-0050	2	Washer, Lock - Spring (3/8-16 x 1-1/4")
	212-0359	2	Bottom and Right Side Positions	38	526-0030	2	Washer, Flat (3/8")
	212-0360	2	Top and Left Side Positions	39	800-0050	4	Screw, Cap - Hex Head (3/8-16 x 1-1/4")
15	214-0095	4	Brush, DC	40	850-0050	4	Washer, Lock - Spring (3/8-16 x 1-1/4")
16	214-0096	8	Brush, AC	41	812-0156	2	Screw, Machine - Round Head (1/4-20 x 1-1/4" Lg)
17	212-1232	12	Spring, Brush	42	850-0040	2	Washer, Lock - Spring (1/4-20 x 1-1/4" Lg)
18	520-0733	1	Stud, Plated	43	516-0196	4	Pin, Alignment (1/4 Dia. 7/8")
19	800-0044	4	Screw, Cap - Hex Head (5/16-18 x 7-1/2")				
20	850-0045	3	Washer, Lock - Spring (5/16")				
21	526-0115	4	Washer, Flat (5/16")				

* - Parts Included in Armature.

† - Parts Included in Generator Brush Blocks.

Generator
Begin Spec R



Generator Begin Spec R

REF NO.	PART NO.	QTY USED	PART DESCRIPTION	REF NO.	PART NO.	QTY USED	PART DESCRIPTION
1	201-2414	1	Armature, Generator (Includes Parts Marked *)	25	204-0110	1	*Ring, Collector
2	232-2316	1	Hub, Drive	26	800-0044	4	Screw, Cap - Hex Head (5/16-18 x 7-1/2")
3	515-0006	1	Key, Rotor to Crankshaft	27			Resistor, Fixed
4	510-0047	1	*Bearing (Ball), Rotor		353-0071	1	5 Amp Battery Charger
5	232-0596	1	Clip, Bearing Stop		353-0072	1	10 Amp Battery Charger
6	520-0733	1	Stud, Rotor Through	28	205-0090	1	Fan, Generator
7	220-1816	1	Stator, Wound	29	515-0007	1	Key, Drive Hub
8			Lead, Brush	30	812-0118	1	Screw, Machine - Round Head (#10-24 x 5")
	336-1891	4	Blade Type Terminals (9")	31	815-0359	15	Screw, Tapping - Hex Head (#10-32 x 7/8" Lg)
	336-1890	4	Blade Type and Round Type Terminal (4")	32	871-0010	8	†Nut, Hex - Brass (#10-32)
9	336-0186	3	Jumper, Ground (3-1/2")	33	853-0008	8	†Washer, Lock - External (#10)
10	304-0706	2	Bracket, Resistor Mounting	34	526-0049	4	†Washer, Flat - Brass (#10)
11	231-0164	1	Adapter, Generator to Engine (Includes 4 Alignment Pins)	35	815-0341	4	†Screw, Machine - Hex Head Brass (#10-32 x 1")
12	304-0015	2	Washer, Centering Resistor	36	862-0015	4	Nut, Hex (5/16-18)
13	850-0045	3	Washer, Lock - Spring (5/16")	37	850-0055	1	Washer, Lock - Spring (7/16-20)
14			*Block, Brush (Includes Parts Marked †)	38	870-0203	1	Nut, Hex (7/16-20)
	212-0352	1	Bottom	39	850-0040	2	Washer, Lock - Spring (1/4-20 x 1-1/2")
	212-0353	1	Left Side	40			Screw (1/4-20 x 1-1/2")
	212-0345	1	Right Side		815-0441	2	Hex Head, Tapping - 5 Amp Battery Charger
	212-0361	1	Top		812-0156	2	Round Head - 10 Amp Batt Charger
15	214-0095	4	*Brush, Commutator	41	800-0050	4	Screw, Cap - Hex Head (3/8-16 x 1")
16	214-0096	8	Brush, Collector	42	850-0050	4	Washer, Lock - Spring (3/8-16 x 1-1/4")
17	212-1232	12	Spring, Brush	43	800-0051	2	Screw, Cap - Hex Head (3/8-16 x 1-1/4")
18	232-2107	1	Cover, Generator Fan	44	850-0050	2	Washer, Lock - Spring (3/8-16 x 1-1/4")
19	234-0362	1	Wrapper, End Bell	45	526-0030	1	Washer, Flat (3/8")
20			Bell, End (Includes 4 Alignment Pins)	46	516-0196	4	Pin, Alignment (.249 Dia. .862 Lg)
	211-0364	1	5 Amp Battery Charger	47	850-0030	1	Washer, Lock - Spring (#10-24)
	211-0365	1	10 Amp Battery Charger	48	860-0011	1	Nut, Hex (#10-24)
21			Harness, Wiring	49	526-0115	4	Washer, Flat (5/16")
	338-1709	1	5 Amp Battery Charger				
	338-1332	1	10 Amp Battery Charger				
	338-0948	1	Remote Units - Begin Spec R - 60 Hz				
22	516-0182	8	Pin, Roll - Generator Frame (1/4 x 3/4")				
23	402-0475	2	Support, Generator				
24	203-0152	1	*Commutator				

* - Parts Included in Armature.

† - Parts Included in Generator Brush Blocks.

**Control
(Begin Spec K)**

This diagram illustrates the assembly of a control unit. The main components and their assembly sequence are as follows:

- Base Assembly (1, 2, 3):** The main chassis or base unit.
- Internal Components (4, 5, 6, 7, 8, 9, 10, 11, 12, 13, 14, 15, 16, 17, 18, 19, 20, 21, 22, 23, 24, 25, 26, 27, 28, 29, 30, 31, 32, 33, 34, 35, 36, 37, 38, 39, 40, 41, 42, 43, 44, 45, 46, 47):** Various internal components including wiring harnesses, connectors, switches, and mechanical parts.
- Assembly Steps:**
 - Install component 1 on the base.
 - Install component 2 on the base.
 - Install component 3 on the base.
 - Install component 4 on the base.
 - Install component 5 on the base.
 - Install component 6 on the base.
 - Install component 7 on the base.
 - Install component 8 on the base.
 - Install component 9 on the base.
 - Install component 10 on the base.
 - Install component 11 on the base.
 - Install component 12 on the base.
 - Install component 13 on the base.
 - Install component 14 on the base.
 - Install component 15 on the base.
 - Install component 16 on the base.
 - Install component 17 on the base.
 - Install component 18 on the base.
 - Install component 19 on the base.
 - Install component 20 on the base.
 - Install component 21 on the base.
 - Install component 22 on the base.
 - Install component 23 on the base.
 - Install component 24 on the base.
 - Install component 25 on the base.
 - Install component 26 on the base.
 - Install component 27 on the base.
 - Install component 28 on the base.
 - Install component 29 on the base.
 - Install component 30 on the base.
 - Install component 31 on the base.
 - Install component 32 on the base.
 - Install component 33 on the base.
 - Install component 34 on the base.
 - Install component 35 on the base.
 - Install component 36 on the base.
 - Install component 37 on the base.
 - Install component 38 on the base.
 - Install component 39 on the base.
 - Install component 40 on the base.
 - Install component 41 on the base.
 - Install component 42 on the base.
 - Install component 43 on the base.
 - Install component 44 on the base.
 - Install component 45 on the base.
 - Install component 46 on the base.
 - Install component 47 on the base.

The diagram includes a detailed exploded view of the control unit, showing the internal wiring and components. The components are numbered 1 through 47, and the assembly steps are indicated by arrows and numbers.

**Control
(Begin Spec K)**

This diagram illustrates the assembly of a control unit, showing the main cabinet and its internal components. The parts are numbered as follows:

- 30**: Main power cable with multiple conductors.
- 35**: Cable connector or plug.
- 36**: Small terminal or connector.
- 33**: Bundle of control wires.
- 20**: Individual control wire terminals.
- 40**, **39**, **41**, **42**: Small electronic components or connectors.
- 29**: Small screw or fastener.
- 25**: Relay or switch assembly.
- 31**: Terminal block or connector.
- 16**: Circular component, possibly a fan or filter.
- 32**: Bundle of control wires.
- 30**: Main power cable (repeated).
- 33**: Bundle of control wires (repeated).
- 34**: Cable connector or plug.
- 22**: Small electronic component.
- 20**: Individual control wire terminals (repeated).
- 23**: Small screw or fastener.
- 21**: Small electronic component.
- 19**: Base plate or mounting surface.
- 17**: Small electronic component.
- 11**: Small screw or fastener.
- 24**: Small electronic component.
- 2**: Small screw or fastener.
- 15**: Small screw or fastener.
- 13**: Relay or switch assembly.
- 14**: Terminal block or connector.
- 10**: Relay or switch assembly.
- 8**: Small electronic component.
- 9**: Small screw or fastener.
- 7**: Small screw or fastener.
- 6**: Small screw or fastener.
- 45**: Cable connector or plug.
- 44**: Cable connector or plug.
- 43**: Bundle of control wires.
- 47**: Small electronic component.
- 46**: Small screw or fastener.
- 37**: Small screw or fastener.
- 18**: Small screw or fastener.
- 38**: Small screw or fastener.
- 27**: Small screw or fastener.
- 28**: Small screw or fastener.
- 26**: Small screw or fastener.
- 5**: Transformer or power supply unit.
- 4**: Main cabinet or enclosure.
- 1**: Main cabinet or enclosure (repeated).

The diagram shows the main cabinet (1) with a door (3) and a control panel (2). The internal components are shown in an exploded view, indicating their relative positions and assembly sequence. The control panel (2) features several relays (10, 13, 25) and terminal blocks (14, 31). The main power cable (30) is connected to the unit via a plug (35). The control wires (33) are connected to the terminal blocks and individual terminals (20). The transformer (5) is mounted on the back of the cabinet. The door (3) has a handle (7) and a lock (6). The control panel (2) has a display window (19) and a control knob (17). The unit is secured with various screws (2, 4, 6, 7, 9, 11, 15, 23, 26, 29, 37, 46).

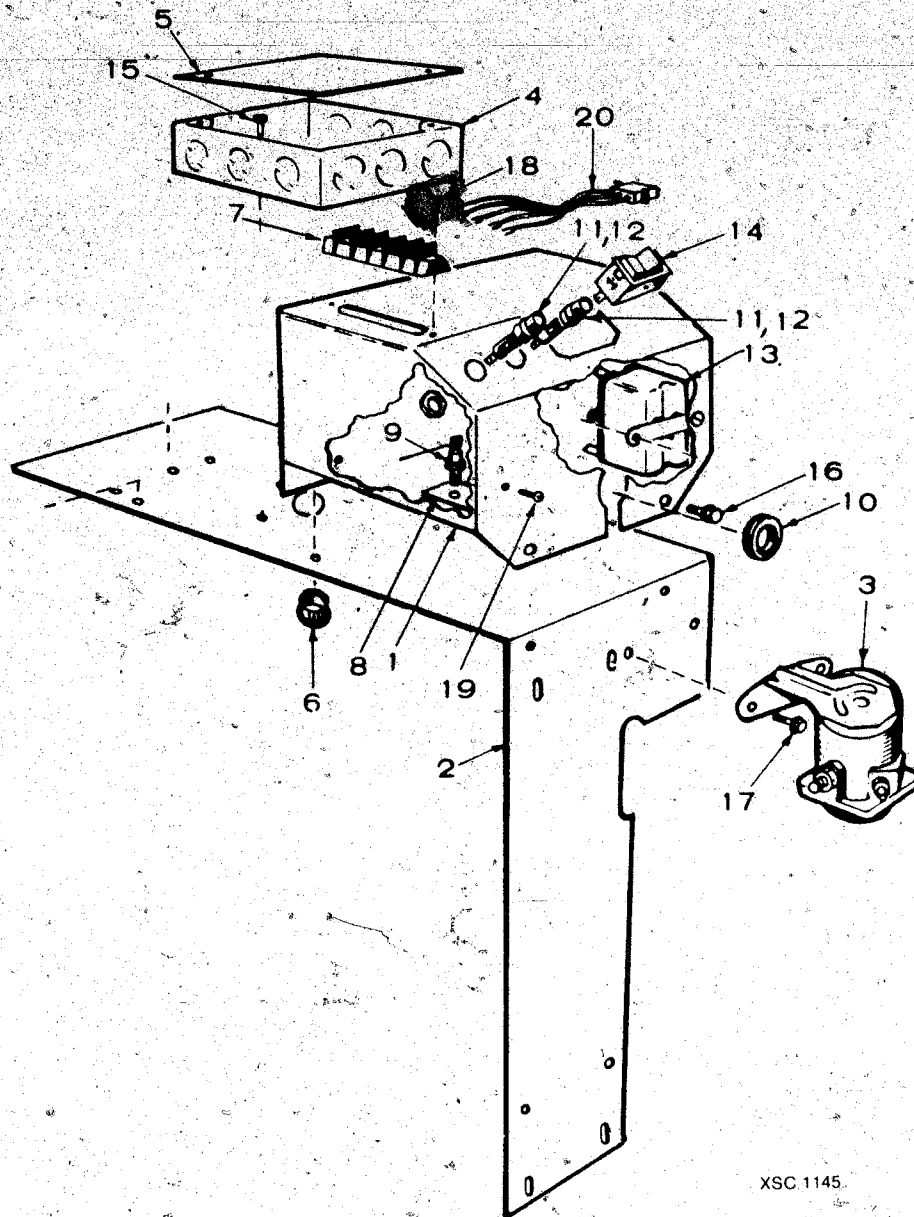
SC1009

Control (Begin Spec K)

REF NO.	PART NO.	QTY USED	PART DESCRIPTION	REF NO.	PART NO.	QTY USED	PART DESCRIPTION
1			Box, Control	29	821-0009	4	Screw, Cap - Hex Washer Head (1/4-20 x 3/8")
	301-4446	1	Begin Spec K				
	301-4634	1	Begin Spec R - 60 Hz	30			Harness, Wiring - Control
2	301-4442	1	Panel, Control				Prior to Serial #D7833304
3			Cover, Control (Includes AC Schematic)				During Spec K (Includes Parts Marked *)
			60 Hertz	338-1084	1		Sets Without Start-Disconnect
	301-4466	1	Spec K	338-1084	1		Sets With Start-Disconnect (Also Order Quantity 352-0161 Resistor)
			Prior to Serial #D783330433				Begin Serial #D783330433
	301-4543	1	Begin Serial #D783330433				During Spec K
	301-4894	1	Begin Spec M	338-1169	1		Sets Without Start-Disconnect (Includes Parts Marked †)
	301-9015	1	Begin Spec R - Code FD	338-1265	1		Sets With Start-Disconnect (Includes Parts Marked †)
			50 Hertz	338-1265	1		Begin Spec M (Includes Parts Marked *)
	301-4545	1	Begin Spec K	338-1820	1		Begin Spec R - 60 Hertz (Includes Parts Marked †)
	301-6107	1	Begin Spec M - 1 Phase				
	301-6108	1	Begin Spec M - 3 Phase	31	323-1088	3	Nut, Wire
4	301-4441	1	Plate, Control	32	332-1043	2	x**Jumper, Block - Terminal
5	305-0383	1	Regulator, Voltage - Begin Spec R - 60 Hz	33	357-0030	1	x**†Rectifier, Diode
6	815-0350	1	Screw, Tapping - Slotted, Hex Washer Head (#10-32 x 3/8")	34	338-1078	1	Harness, Wiring (Includes Parts Marked †)
7	518-0056	1	Screw, Wing (#10-32 x 1/2")				Prior to Serial #D7833304
8			Relay, Solenoid - Start Through Spec K				During Spec K
	307-1498	1	Sets Without Start-Disconnect	35	323-0440	1	†\$Housing, Pin - Connector
			Sets With Start-Disconnect	36	323-0488	6	†\$Pin, Connector - Female
	307-1617	1	Begin Spec M	37			Breaker, Circuit
9	821-0009	2	Screw, Cap - Hex Washer Head (1/4-20 x 3/8")		320-0733	1	Spec K
10	307-2562	2	†**xRelay, Ignition (Crank Ignition and Run Ignition)				Kit, Replacement (Replaces Qty. 1 50 Amp Breaker with Qty. 2 30 Amp Breakers). (Includes Parts Marked #)
11	815-0340	2	Screw, Machine - Round Head (#10-32 x 3/8")		320-0544	2	Begin Spec M
12	870-0131	2	Nut, Lock - ET (#10-32)		320-0751		#60 Hertz Sets (30 Amp)
13			Switch				50 Hertz Sets (25 Amp)
	308-0383	1	Start-Stop - Spec K	38			Strip, Marker - Terminal B
	308-0788	1	Ignition - Begin Spec R		332-2099	1	Spec K
14	321-0175	2	Holder, Fuse		332-2099	1	Begin Spec M
15			Fuse				60 Hertz Sets
	321-0298	2	5 Amp - 250 Volt		332-2288	1	50 Hertz Sets
	321-0146	1	10 Amp - 32 Volt	39	508-0015	1	Begin Spec R - 60 Hertz
16	508-0208	1	Bushing, Insulating - Nylon (3/4" Hole)	40	815-0238	1	Washer, Fibre
17	331-0088	1	Bushing, Insulating				Screw, Machine - Round Head with ET (#8-32 x 7/16")
18	508-0191	1	Bushing, Insulating - Nylon (7/8" Hole)	41	853-0005	1	Washer, Lock - ET (#8)
19	304-0580	1	Insulator, Mounting - Resistor	42	526-0048	1	Washer, Flat - Brass (8")
20			Resistor	43			Harness, Wiring - Remote (Includes Parts Marked †)
	352-0160	1	Through Spec K		338-1082	1	6 Inch
			*† 120 Ohm, 5 Watt - Sets Without Start-Disconnect		338-1080	1	10 Foot
	352-0161	1	*† 100 Ohm, 5 Watt - Sets With Start-Disconnect		338-1081	1	30 Foot
	352-0161	1	x** Begin Spec M,R	44	323-0400	1	%Housing, Pin - Connector
21	812-0087	1	Screw, Machine - Round Head (#8-32 x 1-1/2")	45	323-0500	5	%Pin, Connector - Male
22	870-0221	2	Nut, Lock (#8-32)	46	508-0021	1	Grommet, Rubber - Begin Sp
23	821-0004	5	Screw, Cap - Hex Head (#10-32 x 5/16")				R - 60 Hz
24	856-0003	2	Washer, Lock - EIT (#10)	47	332-1876	1	Clamp, AC Leads - Begin Sp
25			Block, Terminal				
	332-0699	1	x** 6 Place				
	332-0254	1	4 Place				
	332-2103	1	6 Place, Begin Spec R, 60 Hz				
26			Screw, Machine - Round Head				
	812-0066	2	#6-32 x 3/4" - Begin Spec K				
	812-0065	2	#6-32 x 5/8" - Begin Spec R				
27			Washer, Lock				
	853-0003	2	ET (#6) Begin Spec K				
			ET (#6) Begin Spec R				

x - Parts Included in 338-1820 Wiring Harness
 * - Parts Included in 338-1084 Wiring Harness
 † - Parts Included in 338-1169 Wiring Harness
 † - Parts Included in 338-1265 Wiring Harness
 † - Parts Included in 338-1078 Wiring Harness
 # - Parts Included in 320-0733 Circuit Breaker Kit
 % - Parts Included in 338-1080, 338-1081, 338-1082 Wiring Harness

Control (Spec J Only)



XSC 1145

REF NO.	PART NO.	QTY USED	PART DESCRIPTION	REF NO.	PART NO.	QTY USED	PART DESCRIPTION
1	301-4038	1	Box, Control	16	815-0350	4	Screw, Self-Tapping - Hex Washer Head - Control Box Mounting (#10-32 x 3/8")
2	301-4039	1	Bracket, Mounting - Control	17	821-0009	2	Screw, Self-Locking - Hex Washer Head - Start Solenoid Mounting (1/4-20 x 3/8")
3	307-1498	1	Relay, Solenoid - Start	18	815-0388	2	Screw, Tapping - Pan Head - Terminal Block Mounting (#6-32 x 1/2" Lg)
4	330-0028	1	Box, Outlet	19	815-0438	3	Screw, Tapping - Round Head Rectifier Plate Mounting (#8 x 3/8")
5	330-0006	1	Cover, Box - Outlet	20	338-0958	1	Harness, Wiring - Optional
6	508-0191	1	Grommet, Nylon				
7	332-1918	1	Block, Terminal				
8	370-1002	1	Plate, Mounting - Rectifier				
9	305-0235	1	Rectifier				
10	508-0008	1	Grommet				
11	321-0175	2	Holder, Fuse				
12	321-0174	2	Fuse (5 Amp, 250 Volt)				
13	307-2562	1	Relay, Armature (SPST - 8 Amp, 12 Volt)				
14	308-0383	1	Switch, Push (SPDT)				
15	815-0350	2	Screw, Self-Tapping - Hex Washer Head - Outlet Box Mounting (#10-32 x 3/8")				

Labels, Paint, Thread Sealant, and Gasket Kits

REF NO.	PART NO.	QTY USED	PART DESCRIPTION	REF NO.	PART NO.	QTY USED	PART DESCRIPTION
	98-1100	1	Decal Kit, Generator - Spec J		154-2542	1	+Gasket, Exhaust Manifold/ Muffler
	98-4269	1	5.0 RV Gen Set - Label (Logo)		154-2747	2	+Gasket, Exhaust Manifold
	98-4270	1	5.5 RV Gen Set - Label (Logo)		168-0191	1	Kit, Gasket - Engine Compl (Includes Parts Marked *)
	98-4271	1	6.5 RV Gen Set - Label (Logo)		101-0782	1	*Gasket, Rear Bearing Plate
	98-3234	1	6.5 NH - Control Panel Decal Begin Spec R		102-1409	1	*Gasket, Oil Base
	98-4694	1	6.5 Gen Set (Silkscreen)		103-0810	1	*Gasket, Gearcase
	98-4693	1	5.5 Gen Set (Silkscreen)		110-2987	2	*Gasket, Cylinder Head
	98-4692	1	5.0 Gen Set (Silkscreen)		110-3136	2	*Gasket, Valve Guide
	98-4856	1	Silkscreen - SVC Instructions		110-3575	3	*Gasket, Valve Box
	98-3191	1	Label, Warning		110-3604	2	*Seal, Valve Stem - 11/32"
	98-3074	1	Silkscreen - SVC Instructions		120-0161	1	*Kit, Gasket - Oil Pump
	98-5291	1	Silkscreen - Control Panel		122-0774	1	*Gasket, Oil Filter Adapter
	518-0452	1	Sealant, Thread (50cc Bottle)		123-0191	1	*Gasket, Oil Fill Cap
	518-0347	1	Loctite, Bottle (250cc)		149-0003	1	*Gasket, Fuel Pump
	525-0305	1	Paint, Enamel Touch-Up Green (Non-Metallic) 13 oz. Pressurized Can		154-0733	1	*Gasket, Adapter to Carbure
	525-0137	1	Paint, Touch-Up - Enamel (Metallic Green) - 13 oz. Pressurized Can		154-2061	2	*Gasket, Exhaust Manifold
	168-0190	1	Kit, Gasket - Carbon Removal (Includes Parts Marked +)		154-2219	2	*Gasket, Intake Manifold
	110-3136	2	+Gasket, Valve Guide		154-2747	2	*Gasket, Exhaust Manifold
	110-2987	2	+Gasket, Cylinder Head		160-1150	1	*Gasket, Breaker Box
	110-3575	3	+Gasket, Valve Cover		509-0008	1	*Seal, Oil (Gov. Shaft)
	110-3604	2	+Seal, Oil (Valve)		509-0040	1	*Seal, Oil (Gearcase)
	154-2061	2	+Gasket, Exhaust Manifold/ Muffler		509-0041	1	*Seal, Oil (Bearing Plate)
	154-2219	2	+Gasket, Intake Manifold		509-0117	1	*O-Ring, 1.75 OD, 1.50 ID
					509-0145	1	*O-Ring (Air Cleaner to Car

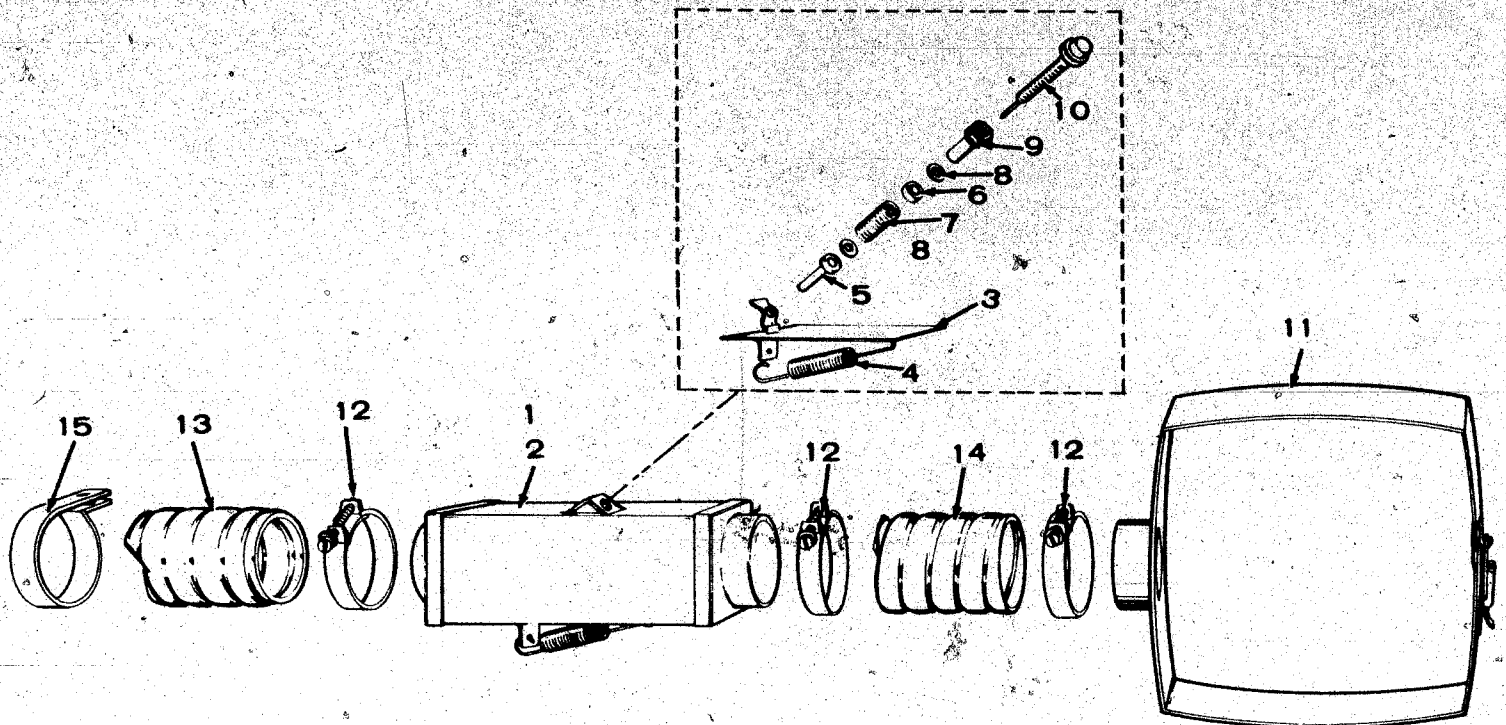
* - Parts Included in 168-0191 Gasket Kit.

+ - Parts Included in 168-0190 Gasket Kit.

Optional Parts Section

This section contains illustrated parts listings of factory installed options. Options may not be applicable to all models; for field conversions additional parts are usually required.

Carburetor Air Preheater - Optional

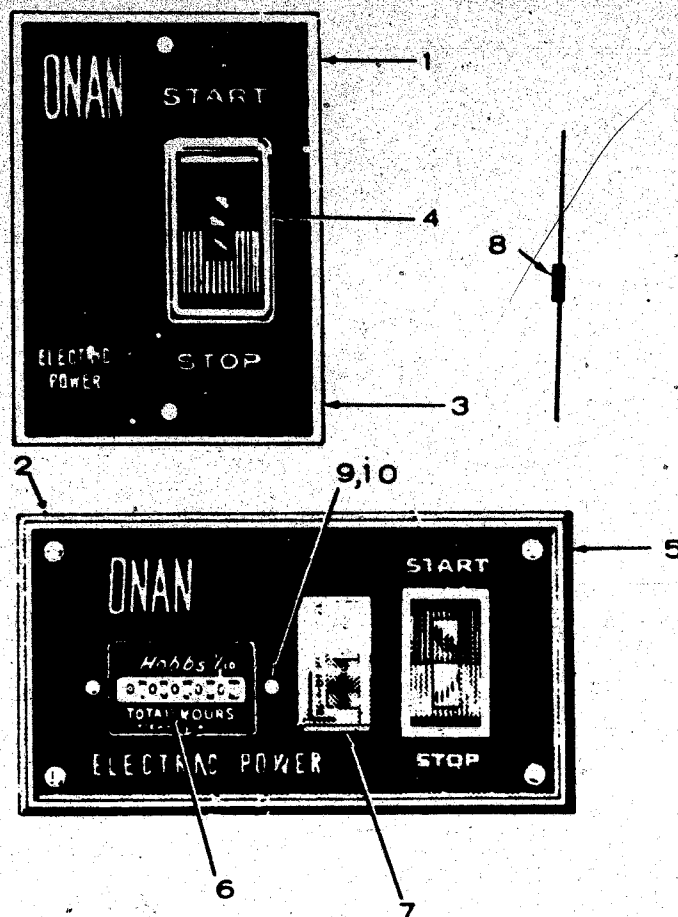


EXS 1031

REF NO.	PART NO.	QTY USED	PART DESCRIPTION	REF NO.	PART NO.	QTY USED	PART DESCRIPTION
	140-1673	1	Preheater Kit, Air - Carburetor	8	518-0205	2	*Ring, Retaining
1	140-0788	1	Control, Temperature - Air (Includes Parts Marked *)	9	870-0195	1	*Palnut
2	140-0785	1	*Housing, Control	10	309-0181	1	*Vernatherm
3	140-0782	1	*Shutter	11	140-1672	1	Wrapper, Cleaner - Air
4	140-0786	1	*Spring, Return - Shutter	12	503-0004	3	Clamp, Hose
5	140-0784	1	*Plunger	13	503-0981	1	Hose, Duct (12" Long)
6	140-0808	1	*Spacer, Vernatherm	14	503-0980	1	Hose, Duct (3" Long)
7	140-0787	1	*Spring, Vernatherm	15	332-2247	1	Clamp, Loop

* - Parts Included in the Air Temperature Control

Remote Start Control - Optional



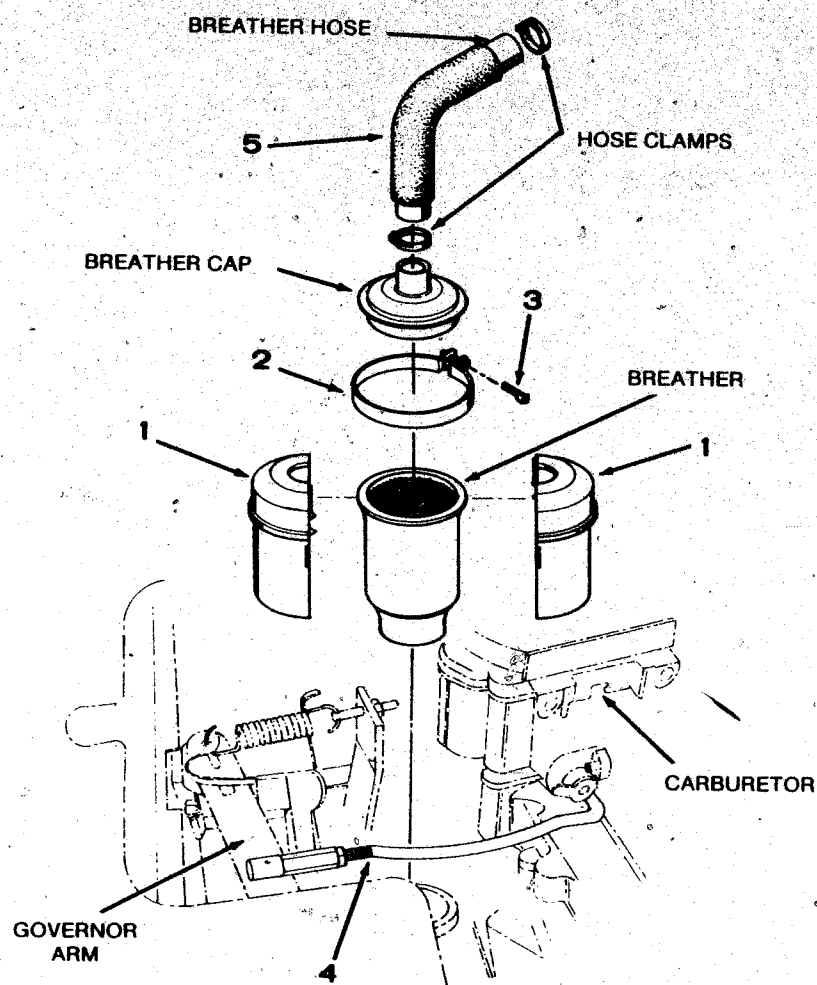
REF NO.	PART NO.	QTY USED	PART DESCRIPTION
1	300-0985	1	Control Package, Remote Starting - Standard (Includes Parts Marked *)
2	300-0986	1	Control Package, Remote Starting - Deluxe (Includes Parts Marked †)
3	301-3566	1	*Panel, Control
4	308-0341	1	*†Switch, Rocker

REF NO.	PART NO.	QTY USED	PART DESCRIPTION
5	301-3606	1	†Panel, Control
6	302-0885	1	†Meter, Totalizing - Time
7	302-0888	1	†Meter, Condition - Battery
8	359-0034	1	†Diode
9	815-0385	2	†Screw, Machine - Round Head (#6-32 x 1/2")
10	860-0005	2	†Nut, Hex Head (#6-32)

* - Parts Included in Standard Control.

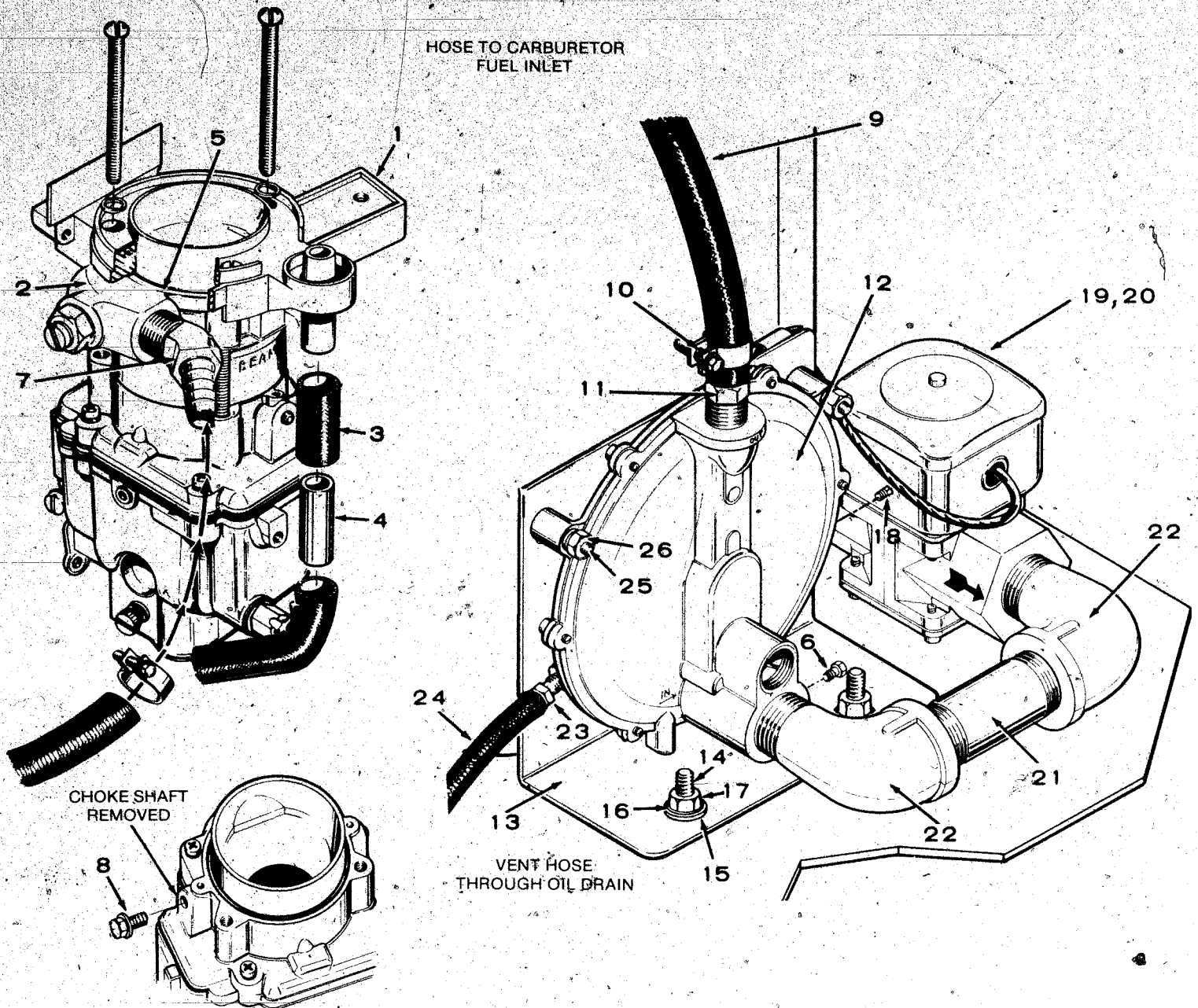
† - Parts Included in Deluxe Control.

Breather Insulation - Optional



REF NO.	PART NO.	QTY USED	PART DESCRIPTION	REF NO.	PART NO.	QTY USED	PART DESCRIPTION
1	123-0998	2	Insulator, Breather	4	150-0979	1	Rod, Control - Governor
2	518-0268	2	Clamp, Breather	5	503-1189	1	Insulation, Hose - Breather
3	809-0035	1	Screw, Round Head (#8 x 3/4")				

LP Fuel System - Optional Begin Spec M



REF NO.	PART NO.	QTY USED	PART DESCRIPTION	REF NO.	PART NO.	QTY USED	PART DESCRIPTION
1	140-1719	1	Adapter, Duct - Air	14	800-0008	2	Screw, Cap - Hex Head (1/4-20 x 1-1/4")
2	148-0840	1	Adapter, Carburetor (Includes Gaskets, Screws, 3-#10 Lock Washers)	15	526-0018	2	Washer, Flat (1/4")
3	503-1039	1	Hose, Breather (7/16 x 1-1/2")	16	850-0040	2	Washer, Lock (1/4")
4	123-1484	1	Tube, Breather (Copper)	17	862-0001	2	Nut, Hex (1/4-20)
5	509-0145	1	Seal, O-Ring	18	505-0057	1	Plug, Square Head (1/8")
6	502-0028	1	Plug, Pipe - Hex Head (1/8")	19	307-1881	1	Solenoid
7	502-0575	1	Elbow, Hose - 45°	20	307-0312	1	Valve, Magnetic
8	815-0389	1	Screw, Thread Form - Choke Shaft Hole (1/4-20 x 5/8")	21	505-0332	1	Nipple, Pipe
9	503-1048	1	Hose, Fuel (1/2" ID x 30")	22	505-0051	2	Elbow, Street (90°)
10	503-0032	2	Clamp, Hose	23	502-0395	1	Connector, Hose - Vent (1/4"
11	502-0238	1	Connector, Hose (1/2")	24	503-1016	1	Hose, Oil (1/2" ID x 12")
12	148-0311	1	Regulator, Gas	25	800-0028	2	Screw, Cap - Hex Head (5/16-18 x 1")
13	148-0852	1	Bracket	26	870-0257	2	Nut, Hex (5/16-18)

Numerical Index

Part No.	Page	Part No.	Page	Part No.	Page	Part No.	Page
98-1100	33	110-1716	5	113-0203-30	11	134-4316	24
98-3074	33	110-1716-02	5	113-0203-40	11	140-0495	14
98-3191	33	110-1716-05	5	114-0036	11	140-0495	15
98-3234	33	110-1716-10	5	114-0188	11	140-0782	35
98-4269	33	110-1716-25	5	114-0188-02	11	140-0784	35
98-4270	33	110-1718	5	114-0188-10	11	140-0785	35
98-4271	33	110-1719	5	114-0188-20	11	140-0786	35
98-4692	33	110-1912	5	114-0188-30	11	140-0787	35
98-4693	33	110-1913	5	114-0203	11	140-0788	35
98-4694	33	110-1974	5	115-0006	5	140-0808	35
98-4856	33	110-2340	5	115-0006-05	5	140-1153	14
98-5291	33	110-2713	5	120-0140	6	140-1173	14
101-0405	5	110-2987	5	120-0161	6	140-1240	14
101-0432	5	110-2987	33	120-0161	33	140-1492	17
101-0432-02	5	110-3136	5	120-0398	6	140-1502	15
101-0432-10	5	110-3136	33	120-0400	6	140-1503	15
101-0432-20	5	110-3167	5	120-0413	6	140-1504	15
101-0432-30	5	110-3168	5	120-0491	6	140-1520	15
101-0439	5	110-3461	5	120-0680	5	140-1521	15
101-0450	5	110-3461-01	5	122-0320	6	140-1522	15
101-0450-02	5	110-3461-02	5	122-0323	6	140-1528	15
101-0450-10	5	110-3461-03	5	122-0345	9	140-1529	15
101-0450-20	5	110-3461-04	5	122-0360	6	140-1531	15
101-0450-30	5	110-3575	5	122-0502	6	140-1533	15
101-0782	5	110-3575	33	122-0774	6	140-1672	35
101-0782	33	110-3604	5	122-0774	33	140-1673	35
102-0801	9	110-3604	33	123-0191	9	140-1719	38
102-0889	9	112-0112	11	123-0191	33	145-0438	18
102-0957	9	112-0180	11	123-0489	9	145-0504	14
102-1275	9	112-0180-05	11	123-0733	14	146-0142	19
102-1387	9	112-0180-10	11	123-0865	5	146-0208	19
102-1409	33	112-0180-20	11	123-0951	5	146-0209	19
103-0667	13	112-0180-30	11	123-0952	5	146-0220	17
103-0810	13	112-0180-40	11	123-0954	5	146-0220	19
103-0810	33	112-0228	11	123-0958	5	146-0222	19
104-0032	10	112-0228-05	11	123-0998	37	146-0238	19
104-0043	10	112-0228-10	11	123-1400	9	146-0243	19
104-0091	5	112-0228-20	11	123-1417	5	146-0247	19
104-0170	10	112-0228-30	11	123-1484	38	146-0248	19
104-0575	5	112-0228-40	11	134-2747	24	146-0261	19
104-0776	5	113-0165	11	134-2752	24	146-0262	19
104-1314	10	113-0165-05	11	134-2755	24	146-0264	19
105-0332	10	113-0165-10	11	134-2761	24	146-0265	17
105-0541	10	113-0165-20	11	134-2763	24	146-0265	19
105-0638	10	113-0165-30	11	134-3119	24	146-0267	19
110-0539	5	113-0165-40	11	134-3312	24	146-0268	19
110-0639	5	113-0203	11	134-3617	24	146-0289	17
110-0893	5	113-0203-05	11	134-3618	24	146-0289	19
110-0904	5	113-0203-10	11	134-4095	24	146-0290	17
110-1624	5	113-0203-20	11	134-4245	10	146-0290	19

Numerical Index

Part No.	Page	Part No.	Page	Part No.	Page	Part No.	Page
146-0307	19	153-0114	17	160-1303	23	232-2619	27
146-0308	19	153-0489	17	160-1311	23	234-0362	27
146-0322	18	153-0499	17	160-1368	23	234-0362	29
146-0325	18	154-0733	17	166-0554	22	300-0985	36
146-0326	17	154-0733	18	166-0588	22	300-0986	36
146-0326	18	154-0733	19	166-0702	22	301-3566	36
146-0329	17	154-0733	33	166-0702	23	301-3606	36
146-0329	18	154-1578	20	166-0772	22	301-4038	32
146-0331	18	154-1861	17	167-0247	22	301-4039	32
146-0335	18	154-1864	20	167-0263	22	301-4441	31
146-0340	18	154-1887	20	167-0292	22	301-4442	31
146-0341	18	154-1888	20	167-1602	22	301-4446	31
146-0342	18	154-1915	20	168-0190	5	301-4466	31
146-0343	18	154-1917	21	168-0190	33	301-4543	31
146-0356	17	154-1967	21	168-0191	5	301-4545	31
146-0356	18	154-1968	21	168-0191	33	301-4634	31
146-0417	17	154-1969	21	201-2414	29	301-4894	31
146-0417	18	154-1972	21	201-2503	27	301-6107	31
146-0418	18	154-1980	21	201-2506	27	301-6108	31
146-0419	17	154-2061	33	201-2508	27	301-9015	31
146-0419	18	154-2146	21	203-0152	27	302-0885	36
146-0420	18	154-2167	21	203-0152	29	302-0888	36
148-0311	38	154-2219	17	204-0110	27	304-0014	27
148-0840	38	154-2219	33	204-0110	29	304-0015	29
148-0852	38	154-2226	21	205-0090	27	304-0580	31
149-0003	13	154-2292	17	205-0090	29	304-0706	29
149-0003	33	154-2419	21	211-0364	27	305-0235	32
149-1417	17	154-2426	21	211-0364	29	305-0383	31
149-1531	17	154-2542	21	211-0365	29	307-0312	38
149-1828	17	154-2542	33	212-0345	29	307-1457	17
149-2203	17	154-2554	21	212-0352	29	307-1498	31
149-2211	17	154-2747	20	212-0353	29	307-1498	32
150-0075	10	154-2747	21	212-0359	27	307-1617	31
150-0078	10	154-2747	33	212-0360	27	307-1881	38
150-0096	13	155-1222	20	212-0361	29	307-2562	31
150-0098	13	155-1234	20	212-1232	27	307-2562	32
150-0629	13	155-1234	21	212-1232	29	308-0341	36
150-0639	13	155-1235	20	214-0095	27	308-0383	31
150-0678	13	155-1239	20	214-0095	29	308-0383	32
150-0796	13	155-1239	21	214-0096	27	308-0788	31
150-0979	37	155-1258	21	214-0096	29	309-0181	35
150-1187	13	155-1910	21	220-1816	27	309-0237	6
150-1478	13	160-0558	22	220-1816	29	309-0322	6
150-1519	10	160-1150	33	231-0164	27	312-0017	22
150-1520	10	160-1151	22	231-0164	29	312-0246	23
150-1542	13	160-1183	23	232-0596	27	320-0544	31
150-1577	13	160-1190	5	232-0596	29	320-0733	31
150-1612	13	160-1219	23	232-2107	27	320-0751	31
153-0017	17	160-1285	23	232-2107	29	321-0146	31
153-0058	17	160-1303	22	232-2316	29	321-0174	32

Numerical Index

Part No.	Page	Part No.	Page	Part No.	Page	Part No.	Page
321-0175	31	353-0060	27	505-0019	9	518-0452	33
321-0175	32	353-0071	29	505-0051	38	520-0717	5
321-0298	31	353-0072	29	505-0057	38	520-0733	27
323-0400	31	357-0030	31	505-0332	38	520-0733	29
323-0440	31	359-0034	36	508-0008	32	520-0736	5
323-0488	31	370-1002	32	508-0015	31	520-0773	5
323-0500	31	402-0282	9	508-0021	31	525-0137	33
323-1088	31	402-0283	9	508-0191	31	525-0305	33
330-0006	32	402-0284	9	508-0191	32	526-0008	23
330-0028	32	402-0290	9	508-0208	31	526-0013	9
331-0088	31	402-0435	9	509-0008	13	526-0014	9
332-0142	14	402-0475	27	509-0008	33	526-0018	38
332-0254	31	402-0475	29	509-0040	13	526-0021	15
332-0527	17	402-0477	9	509-0040	33	526-0022	17
332-0529	17	402-0480	9	509-0041	5	526-0030	17
332-0699	31	403-1219	9	509-0041	33	526-0030	27
332-1043	31	403-1356	9	509-0065	23	526-0030	29
332-1506	17	403-1484	9	509-0117	5	526-0038	9
332-1876	31	403-1507	9	509-0117	33	526-0048	31
332-1918	32	502-0002	17	509-0145	17	526-0049	27
332-1993	17	502-0003	17	509-0145	33	526-0049	29
332-2099	31	502-0020	17	509-0145	38	526-0062	17
332-2103	31	502-0028	38	510-0013	13	526-0063	5
332-2247	35	502-0053	6	510-0014	13	526-0063	13
332-2288	31	502-0082	17	510-0015	10	526-0065	6
332-2313	31	502-0238	38	510-0047	27	526-0065	13
336-0186	29	502-0313	17	510-0047	29	526-0066	5
336-1890	29	502-0395	17	515-0001	10	526-0066	6
336-1891	29	502-0395	38	515-0006	29	526-0115	17
336-2379	6	502-0575	38	515-0007	29	526-0115	27
336-3377	6	503-0004	14	515-0263	10	526-0115	29
337-0049	9	503-0004	35	516-0072	5	526-0158	15
337-2055	9	503-0032	38	516-0130	13	526-0195	9
338-0946	27	503-0107	14	516-0141	13	526-0198	9
338-0947	27	503-0107	20	516-0182	27	526-0250	5
338-0948	29	503-0107	21	516-0182	29	526-0251	5
338-0958	32	503-0274	14	516-0196	27	526-0262	10
338-1078	31	503-0311	14	516-0196	29	526-0286	9
338-1080	31	503-0761	5	517-0021	24	800-0004	13
338-1081	31	503-0769	5	517-0048	5	800-0007	6
338-1082	31	503-0770	5	518-0004	13	800-0008	38
338-1084	31	503-0802	14	518-0014	10	800-0011	5
338-1099	27	503-0857	5	518-0056	14	800-0028	6
338-1169	31	503-0980	35	518-0056	31	800-0028	38
338-1265	31	503-0981	35	518-0205	35	800-0030	21
338-1332	29	503-1016	38	518-0268	37	800-0032	13
338-1709	29	503-1039	38	518-0294	11	800-0034	13
338-1820	31	503-1048	38	518-0347	33	800-0034	20
352-0160	31	503-1189	37	518-0350	17	800-0034	21
352-0161	31	504-0092	9	518-0390	15	800-0035	17

Numerical Index

Part No.	Page	Part No.	Page	Part No.	Page	Part No.	Page
800-0036	17	815-0388	32	856-0003	22		
800-0044	27	815-0389	38	856-0003	31		
800-0044	29	815-0438	32	856-0006	14		
800-0046	5	815-0441	29	856-0008	9		
800-0047	9	816-0070	15	856-0010	9		
800-0050	17	816-0197	9	856-0012	9		
800-0050	27	816-0206	9	856-0016	9		
800-0050	29	821-0004	22	860-0005	31		
800-0051	5	821-0004	31	860-0005	36		
800-0051	9	821-0008	17	860-0008	27		
800-0051	27	821-0009	14	860-0011	29		
800-0051	29	821-0009	15	862-0001	9		
800-0058	17	821-0009	17	862-0001	38		
800-0064	9	821-0009	24	862-0004	9		
800-0082	9	821-0009	31	862-0015	17		
800-0512	20	821-0009	32	862-0015	21		
800-0512	21	821-0010	5	862-0015	27		
800-0538	17	821-0010	14	862-0015	29		
801-0050	6	821-0010	20	865-0019	15		
802-0022	23	821-0010	21	870-0053	13		
802-0034	23	821-0010	24	870-0131	13		
804-0017	17	821-0018	9	870-0131	22		
805-0010	11	850-0025	27	870-0131	31		
809-0035	5	850-0030	17	870-0195	35		
809-0035	37	850-0030	29	870-0203	27		
812-0065	31	850-0040	6	870-0203	29		
812-0066	31	850-0040	23	870-0212	15		
812-0087	31	850-0040	27	870-0221	31		
812-0092	27	850-0040	29	870-0257	38		
812-0118	29	850-0040	38	871-0010	27		
812-0156	27	850-0045	17	871-0010	29		
812-0156	29	850-0045	20				
815-0046	13	850-0045	21				
815-0110	17	850-0045	27				
815-0194	6	850-0045	29				
815-0238	31	850-0050	5				
815-0261	24	850-0050	9				
815-0285	17	850-0050	27				
815-0340	31	850-0050	29				
815-0341	27	850-0055	9				
815-0341	29	850-0055	10				
815-0350	9	850-0055	27				
815-0350	22	850-0055	29				
815-0350	31	850-2005	22				
815-0350	32	851-0011	14				
815-0358	23	853-0003	31				
815-0359	17	853-0005	31				
815-0359	27	853-0008	27				
815-0359	29	853-0008	29				
815-0385	36	854-0006	31				

SPECIAL PARTS LIST FOR MODEL 6.5NH-Fj SPEC 8100R
FOR STANDARD PARTS REFER TO CATALOG 940-0222 KEY NO. _____
OPTIONAL GROUPS IN CATALOG ARE LISTED BY GROUP NO. BELOW WHEN USED.
WIRING DIAGRAM NO. 611-1142-04

PART NO.	QTY.	DESCRIPTION	PART NO.	QTY.	DESCRIPTION
		Gasoline Carburetion Vacuum Cooled			

SPECIAL PARTS LIST FOR MODEL 5.5NH-53CR SPEC 16000J
 FOR STANDARD PARTS REFER TO CATALOG 940-0222 KEY NO.
 (PARTS CATALOG ALSO CONTAINS COMPONENTS FOR MAJOR OPTIONAL FEATURES LISTED BEL
 WIRING DIAGRAM NO. 611-1127-05

PART NO.	QTY.	DESCRIPTION	PART NO.	QTY.	DESCRIPTION
502-0053	1	Elbow, Street 45° Low Oil Pressure			
503-0768	2	Clamp, Hose - Breather Tube			
153-0489	1	Adapter Assembly, Choke			
149-1541	1	Pump, Fuel - Electric			
502-0196	1	Elbow, Pipe 90° Fuel Pump			
332-0556	1	Connector, Fuel Pump			
149-1554	1	Line, Fuel - Carburetor to Pump			
155-1258	1	Muffler, Spark Arrester			
337-0049	1	Strap, Ground			
321-0174	2	Fuse (5 Amp 32 Volt)			
338-1106	1	Wiring Harness			

SPECIAL PARTS LIST FOR MODEL 5.5NH-57R SPEC 16000J
FOR STANDARD PARTS REFER TO CATALOG 940-0222 KEY NO.
(PARTS CATALOG ALSO CONTAINS COMPONENTS FOR MAJOR OPTIONAL FEATURES LISTED BELOW)
WIRING DIAGRAM NO. 611-1127-02

PART NO.	QTY.	DESCRIPTION	PART NO.	QTY.	DESCRIPTION
502-0053	1	Elbow, Pipe 45° - Low Oil Pressure			
503-0768	2	Clamp, Hose - Breather Tube			
153-0489	1	Adapter Assembly, Choke			
149-1541	1	Pump, Fuel - Electric			
502-0196	1	Elbow, Pipe 90° Fuel Pump			
332-0556	1	Connector, Fuel Pump			
203-0152	1	Commutator, Generator			
201-2409	1	Armature Assembly, Generator			
155-1258	1	Muffler, Spark Arrester			
337-0049	1	Strap, Ground			
321-0174	2	Fuse (5 Amp, 32 Volt)			
338-1106	1	Wiring Harness			

SPECIAL PARTS LIST FOR MODEL 6.5NH-3CR SPEC 16000J
FOR STANDARD PARTS REFER TO CATALOG 940-0222 KEY NO.
(PARTS CATALOG ALSO CONTAINS COMPONENTS FOR MAJOR OPTIONAL FEATURES LISTED BELOW)
WIRING DIAGRAM NO. 611-1127-05

PART NO.	QTY.	DESCRIPTION	PART NO.	QTY.	DESCRIPTION
502-0053	1	Elbow, Street 45° Low Oil Pressure			
503-0768	2	Clamp, Hose - Breather Tube			
153-0489	1	Adapter Assembly, Choke			
149-1541	1	Pump, Fuel - Electric			
502-0196	1	Elbow, Pipe 90° Fuel Pump			
332-0556	1	Connector, Fuel Pump			
149-1554	1	Line, Fuel - Carburetor to Pump			
155-1258	1	Muffler, Spark Arrester			
337-0049	1	Strap, Ground			
321-0174	2	Fuse (5 Amp, 32 Volt)			
338-1106	1	Wiring Harness			

SPECIAL PARTS LIST FOR MODEL

6.5 NH-3CR

SPEC

16000K

FOR STANDARD PARTS REFER TO CATALOG

940-0222

KEY NO.

(PARTS CATALOG ALSO CONTAINS COMPONENTS FOR MAJOR OPTIONAL FEATURES LISTED BELOW)

WIRING DIAGRAM NO.

611-1135-03(ENG)

PART NO.	QTY.	DESCRIPTION	PART NO.	QTY.	DESCRIPTION
110-1718	2	Valve, Intake			
503-0587	1	Hose, Breather			
503-0768	1	Clamp, Breather Hose			
503-0770	1	Clamp, Breather Hose			
309-0319	1	Switch, Low Oil Pressure			
154-1482	2	Gasket, Exhaust Manifold Mounting			
140-1533	2	Seal, Air Cleaner Element			
201-2407	1	Armature Assembly Generator			
203-0152	1	Commutator, Generator			
301-4543	1	Cover, Control Box			
332-2103	1	Marker Strip			
332-0254	1	Block, Terminal			
332-2099	1	Marker Strip			
352-0160	1	Resistor, Fixed (120 Amp - 5 Watts)			
320-0548	1	Circuit Breaker 50 Amp			

SPECIAL PARTS LIST FOR **MODEL** 5.5NH-53CR **SPEC** 16002J
FOR STANDARD PARTS REFER TO **CATALOG** 940-0222 **KEY NO.**
(PARTS CATALOG ALSO CONTAINS COMPONENTS FOR MAJOR OPTIONAL FEATURES LISTED BELOW)
WIRING DIAGRAM NO. 611-1127-05

PART NO.	QTY.	DESCRIPTION	PART NO.	QTY.	DESCRIPTION
502-0053	1	Elbow, Street 45° Low Oil Pressure			
503-0768	2	Clamp, Hose - Breather Tube			
153-0489	1	Adapter Assembly, Choke			
149-1541	1	Pump, Fuel - Electric			
502-0196	1	Elbow, Pipe 90° Fuel Pump			
332-0556	1	Connector, Fuel Pump			
149-1554	1	Line, Fuel - Carburetor to Pump			
337-0049	1	Strap, Ground			
321-0174	2	Fuse (5 Amp, 32 Volt)			
338-1106	1	Wiring Harness			

SPECIAL PARTS LIST FOR MODEL 6.5NH-3CR SPEC 16002J
FOR STANDARD PARTS REFER TO CATALOG 940-0222 KEY NO.
(PARTS CATALOG ALSO CONTAINS COMPONENTS FOR MAJOR OPTIONAL FEATURES LISTED BELOW)
WIRING DIAGRAM NO. 611-1127-05

PART NO.	QTY.	DESCRIPTION	PART NO.	QTY.	DESCRIPTION
502-0053	1	Elbow, Street 45° Low Oil Pressure			
503-0768	2	Clamp, Hose - Breather Tube			
153-0489	1	Adapter Assembly, Choke			
149-1541	1	Pump, Fuel - Electric			
502-0196	1	Elbow, Pipe 90° Fuel Pump			
332-0556	1	Connector, Fuel Pump			
149-1554	1	Line, Fuel - Carburetor to Pump			
337-0049	1	Strap, Ground			
321-0174	2	Fuse (5 Amp 32 Volt)			
338-1106	1	Wiring Harness			

SPECIAL PARTS LIST FOR **MODEL** 6.5NH-3CR **SPEC** 16004J
 FOR STANDARD PARTS REFER TO **CATALOG** 940-0222 **KEY NO.**
 (PARTS CATALOG ALSO CONTAINS COMPONENTS FOR MAJOR OPTIONAL FEATURES LISTED BELOW)
WIRING DIAGRAM NO. 611-1027-01

PART NO.	QTY.	DESCRIPTION	PART NO.	QTY.	DESCRIPTION
502-0053	1	Elbow, Pipe Low Oil Pressure			
503-0768	2	Clamp, Hose - Breather			
153-0499	1	Adapter Assembly Choke			
154-1881	1	Manifold, Exhaust			
154-1887	2	Bracket, Manifold Heat Shield			
154-1888	1	Shield, Heat Exhaust Manifold			
154-1917	1	Tube and Flange Exhaust			
503-0107	1	Clamp, Hose			
155-1258	1	Muffler, Spark Arrester			
155-1915	1	Heat Shield			
154-1383	1	Gasket, Exhaust			
337-0049	1	Strap, Ground Stator Thru Bolt			
321-0174	1	Fuse (5 Amp, 32 Volt)			
338-0984	1	Wiring Harness			
149-1554	1	Line, Fuel Carburetor to Pump			

SPECIAL PARTS LIST FOR MODEL 5.5NH-53CR SPEC 16004K
 FOR STANDARD PARTS REFER TO CATALOG 940-0222 KEY NO.
 (PARTS CATALOG ALSO CONTAINS COMPONENTS FOR MAJOR OPTIONAL FEATURES LISTED BELOW)
 WIRING DIAGRAM NO. (ENG) 611-1135-03

PART NO.	QTY.	DESCRIPTION	PART NO.	QTY.	DESCRIPTION
110-1718	2	Valve, Intake			
503-0857	1	Hose, Breather			
503-0768	1	Clamp, Breather Hose			
503-0770	1	Clamp, Breather Hose			
309-0319	1	Switch, Low Oil Pressure			
154-1482	2	Gasket, Exhaust Manifold Mounting			
140-1533	2	Seal, Air Cleaner Element			
301-4543	1	Cover, Control Box			
332-2103	1	Marker Strip			
332-0254	1	Block, Terminal			
332-2099	1	Marker Strip			
352-0160	1	Resistor, Fixed (120 OHMS - 5 Watt)			
320-0548	1	Circuit Breaker 50 Amp.			

SPECIAL PARTS LIST FOR MODEL 6.5 NH-FJ SPEC 16004R
 FOR STANDARD PARTS REFER TO CATALOG 940-0222 KEY NO.
 OPTIONAL GROUPS IN CATALOG ARE LISTED BY GROUP NO. BELOW WHEN USED.
 WIRING DIAGRAM NO. (AC) 611-1146-03

PART NO.	QTY.	DESCRIPTION	PART NO.	QTY.	DESCRIPTION
98-2899	1	Label, Warning			
98-3261	1	Silkscreen, Air Cleaner			
98-3265	1	Silkscreen, Warning			
98-3278	1	Label, Choke			
98-3717	1	Decal, Schematic - Use with 301-4447 Control Box Cover			
98-3488	1	Silkscreen, Load Connect			
98-0994	1	Silkscreen, Ground			
110-1761	2	Valve, Exhaust			
110-3549	2	Head, Cylinder			
134-2749	1	Scroll, Blower Housing			
146-0498	1	Package, Screw and Plug - Carburetor			
150-1467	1	Linkage, Governor			
301-4447	1	Cover, Control Box			
403-1523-01	1	Bracket, Lifting			
503-0171	1	Clamp, Hose			

SPECIAL PARTS LIST FOR MODEL

5.5NH-53BR

SPEC

16008J

FOR STANDARD PARTS REFER TO CATALOG 940-0222

KEY NO.

(PARTS CATALOG ALSO CONTAINS COMPONENTS FOR MAJOR OPTIONAL FEATURES LISTED B

WIRING DIAGRAM NO. 611-1127-01

PART NO.	QTY.	DESCRIPTION	PART NO.	QTY.	DESCRIPTION
Vacuum Booster					
502-0053	1	Elbow, Pipe - 45° Low Oil Pressure			
503-0768	2	Clamp, Hose - Breather Tube			
154-1920	1	Manifold, Intake			
153-0489	1	Adapter, Assembly Choke			
150-1030	1	Kit, Vacuum Speed Booster Replacement - Includes Parts Marked #			
150-1031	1	#Kit, Diaphragm Replacement Includes Gaskets			
150-0668	1	#Gasket, Diaphragm Plate			
150-0425	1	#Gasket, Booster to Manifold			
150-1354	1	#Spring, Internal			
150-0376	1	#Bracket, Internal Spring Adjustment			
516-0039	1	#Pin, Cotter			
150-0666	1	#Plate, Diaphragm			
516-0085	1	#Pin, Diaphragm Lever Pivot			
150-0471	1	#Spring, External			
813-0111	2	#Screw, Booster Mounting			
853-0008	2	#Washer, Lock			
815-0148	4	#Screw			
150-1332	1	#Shield, Heat			
526-0196	2	#Washer, Flat			
	1	#Housing Booster - Not Sold Separately			
	1	#Cover, Booster Housing - Not Sold Separately			
134-3464	1	Scroll, Blower Housing			
309-0077	1	Switch, High Temperature			
812-0061	2	Screw, Round Head			
860-0006	2	Nut, Hex			
856-0001	2	Lockwasher			
508-0056	2	Washer, Flat Fibre			
508-0031	1	Grommet, Rubber			
336-2963	1	Lead, Temperature Cutoff			
160-0144	1	Strap, Ground			
149-1554	1	Line, Fuel Carburetor to Pump			
201-2410	1	Armature Assembly, Generator			
203-0152	1	Commutator, Generator			
321-0174	2	Fuse (5 Amp, 32 Volt)			
338-0984	1	Wiring, Harness			

SPECIAL PARTS LIST FOR MODEL

5.5NH-53BR

SPEC

16009J

FOR STANDARD PARTS REFER TO CATALOG 940-0222

KEY NO.

(PARTS CATALOG ALSO CONTAINS COMPONENTS FOR MAJOR OPTIONAL FEATURES LISTED BEL

WIRING DIAGRAM NO. 611-1134-02

PART NO.	QTY.	DESCRIPTION	PART NO.	QTY.	DESCRIPTION
Vacuum Booster					
502-0053	1	Elbow, Pipe Low Oil Pressure	149-1554	1	Line, Fuel Carburetor to Pump
503-0768	2	Clamp, Hose - Breather	149-1245	1	Pump, Fuel
154-1920	1	Manifold, Intake	307-1279	1	Solenoid, Fuel
153-0489	1	Adapter, Choke	502-0020	1	Elbow, Fuel Pump
150-1030	1	Kit, Vacuum Speed Booster Replacement - Includes Parts Marked #	149-1503	1	Cable, Connector Fuel Pump
150-1031	1	#Kit, Diaphragm Replacement, Includes Gaskets	201-2410	1	Armature Assembly, Generator
150-0668	1	#Gasket, Diaphragm Plate	203-0152	1	Commutator, Generator
150-0425	1	#Gasket, Booster to Manifold	304-0610	1	Support, Terminal
150-1354	1	#Spring, Internal	338-0642	1	Wiring, Harness
150-0376	1	#Bracket, Internal Spring Adjustment	301-3483	1	Bracket, Control Mount
516-0039	1	#Pin, Cotter	301-4129	1	Cover, Control Box
150-0666	1	#Plate, Diaphragm	332-0142	1	Terminal Solderless
516-0085	1	#Pin, Diaphragm Lever Pivot	301-4314	1	Box, Control
150-0471	1	#Spring, External	508-0199	1	Grommet, Control Box
813-0111	2	#Screw, Booster Mounting	357-0030	1	Rectifier
853-0008	2	#Washer, Lock	304-0060	1	Resistor Fixed
815-0148	4	#Screw	508-0015	2	Washer Insulating
150-1332	1	#Shield, Heat	304-0292	1	Insulator
526-0196	2	#Washer, Flat	508-0002	1	Grommet, Control Box
	1	#Housing, Booster - Not Sold Separately	304-0217	1	Resistor Fixed
	1	#Cover, Booster Housing - Not Sold Separately	307-0253	1	Relay
167-0256	2	Plug, Spark	332-0592	1	Jumper, Ground
160-1259	1	Breaker Box Assembly	338-1048	1	Wiring Harness
312-0069	1	Capacitor, Ignition			
160-1154	1	Point Set, Ignition			
160-1150	1	Gasket, Breaker Box Mtg.			
160-1151	1	Plunger, Ignition Breaker			
160-1149	1	Cover, Breaker Box Ignition			
160-1148	1	Gasket, Breaker Box Cover			
134-3464	1	Scroll, Blower Housing			
309-0077	1	Switch, Hi Temperature			
508-0031	1	Grommet, Rubber			
336-2963	1	Lead, High Temperature			
508-0056	2	Washer, Flat Fibre			
160-0144	1	Strap, Ground			
166-0666	1	Bracket, Mounting - Coil			
166-0382	1	Coil, Ignition			
503-0465	1	Clamp, Hose			
167-1476	1	Cable, Spark Plug			
167-1457	1	Cable, Spark Plug			
337-0221	1	Strap, Ground Coil			

SPECIAL PARTS LIST FOR MODEL 5.0NH-FP SPEC 16010R
FOR STANDARD PARTS REFER TO CATALOG 940-0222 KEY NO. _____
OPTIONAL GROUPS IN CATALOG ARE LISTED BY GROUP NO. BELOW WHEN USED.
WIRING DIAGRAM NO. _____

PART NO.	QTY.	DESCRIPTION	PART NO.	QTY.	DESCRIPTION
		Gasoline Carburetion			
		Exhaust Heat Shields			

SPECIAL PARTS LIST FOR **MODEL** 6.5NH-3CR **SPEC** 16019K
 FOR STANDARD PARTS REFER TO **CATALOG** 940-0222 **KEY NO.**
 (PARTS CATALOG ALSO CONTAINS COMPONENTS FOR MAJOR OPTIONAL FEATURES LISTED BEI
WIRING DIAGRAM NO. 611-1138-02 (ENG)

PART NO.	QTY.	DESCRIPTION	PART NO.	QTY.	DESCRIPTION
110-1718	2	Valve, Intake			
102-0872	1	Base, Oil			
503-0587	1	Tube, Breather			
503-0768	1	Clamp, Hose			
503-0770	1	Clamp, Hose			
154-1482	2	Gasket, Exhaust Manifold			
		Mounting			
134-3551	1	Housing, Cylinder Air - Right			
		Side			
140-1533	2	Seal, Air Cleaner Element			
309-0319	1	Switch, Low Oil Pressure			
122-0438	1	Cover, Oil Filter			
336-3377	1	Lead, Electrical - Low Oil			
		Pressure Switch to Control			
160-1245	1	Indicator, Ignition Timing			
403-1356	1	Plate, Mounting			
203-0152	1	Communtator			
201-2407	1	Armature Assembly Generator			
301-4543	1	Cover, Control Box			
352-0160	1	Resistor (120 OHM - 5 Watt)			
320-0544	1	Circuit Breaker 30 Amp.			
320-0692	1	Circuit Breaker 20 Amp.			
332-2103	1	Marker Strip			
332-0254	1	Block, Terminal			
331-0008	1	Connector (3/4 Greenfield)			
332-2099	1	Marker Strip			

SPECIAL PARTS LIST FOR **MODEL** 6.5NH-3CR **SPEC** 16020K
 FOR STANDARD PARTS REFER TO **CATALOG** 940-0222 **KEY NO.** _____
 (PARTS CATALOG ALSO CONTAINS COMPONENTS FOR MAJOR OPTIONAL FEATURES LISTED BELOW)
WIRING DIAGRAM NO. 611-1138-02 (ENG)

PART NO.	QTY.	DESCRIPTION	PART NO.	QTY.	DESCRIPTION
102-0872	1	Base, Oil			
110-1718	2	Valve, Intake			
309-0319	1	Switch, Low Oil Pressure			
122-0438	1	Cover, Oil Filter			
336-3377	1	Lead, Electrical Low Oil Pressure Switch to Control			
160-1245	1	Indicator, Ignition Timing			
503-0587	1	Tube, Breather			
503-0768	1	Clamp, Breather Hose			
503-0770	1	Clamp, Breather Hose			
134-3551	1	Housing, Cylinder Air - Right Side			
154-1482	2	Gasket, Exhaust Manifold Mounting			
140-1533	2	Seal, Air Cleaner Element			
403-1356	1	Plate, Mounting			
203-0152	1	Communtator			
201-2407	1	Armature Assembly Generator			
301-4543	1	Cover, Control Box			
352-0160	1	Resistor (120 OHM - 5 Watt)			
320-0692	1	Circuit Breaker 20 Amp.			
332-2103	1	Marker Strip			
332-0254	1	Block, Terminal			
331-0008	1	Connector (3/4 Greenfield)			
332-2099	1	Marker Strip			

SPECIAL PARTS LIST FOR MODEL 6.5NH-3CR SPEC 17789J
 FOR STANDARD PARTS REFER TO CATALOG 940-0222 KEY NO.
 (PARTS CATALOG ALSO CONTAINS COMPONENTS FOR MAJOR OPTIONAL FEATURES LISTED BELOW)
 WIRING DIAGRAM NO. 611-1127-05

PART NO.	QTY.	DESCRIPTION	PART NO.	QTY.	DESCRIPTION
502-0053	1	Elbow, Pipe Low Oil Pressure			
503-0768	2	Clamp, Hose Breather			
153-0489	1	Adapter, Choke			
134-3464	1	Scroll, Blower Housing			
309-0077	1	Switch, High Temperature			
508-0056	2	Washer, Flat Fibre			
508-0031	1	Grommet, Rubber			
336-2963	1	Lead, High Temperature Switch			
160-0144	1	Strap, Ground			
149-1554	1	Line, Fuel - Carburetor to Pump			
337-0049	1	Strap, Ground Stator thru Bolt			
149-1541	1	Pump, Fuel - Electric			
502-0196	1	Elbow, Pipe 90° Fuel Pump			
332-0556	1	Connector, Fuel Pump			
321-0174	2	Fuse (5 Amp 32 Volt)			
338-1106	1	Wiring Harness			

SPECIAL PARTS LIST FOR MODEL 6.5NH-4R SPEC 17789J
 FOR STANDARD PARTS REFER TO CATALOG 940-0222 KEY NO.
 (PARTS CATALOG ALSO CONTAINS COMPONENTS FOR MAJOR OPTIONAL FEATURES LISTED BEL
 WIRING DIAGRAM NO. 611-1127-03

PART NO.	QTY.	DESCRIPTION	PART NO.	QTY.	DESCRIPTION
502-0053	1	Elbow, Pipe Low Oil Pressure			
503-0768	2	Clamp, Hose Breather			
153-0489	1	Adapter, Choke			
134-3464	1	Scroll, Blower Housing			
309-0077	1	Switch, High Temperature			
508-0056	2	Washer, Flat Fibre			
508-0031	1	Grommet, Rubber			
336-2963	1	Lead, Switch - High Temperature			
160-0144	1	Strap, Ground - High Temperature			
337-0049	1	Strap, Ground - Stator Thru Bolt			
149-1541	1	Pump, Fuel - Electric			
502-0196	1	Elbow, Pipe 90° Fuel Pump			
332-0556	1	Connector, Fuel Pump			
201-2411	1	Armature, Assembly Generator			
203-0152	1	Commutator, Generator			
321-0174	2	Fuse (5 Amp, 32 Volt)			
338-1106	1	Wiring Harness			

SPECIAL PARTS LIST FOR MODEL 5.5NH-53BR SPEC 18492J
 FOR STANDARD PARTS REFER TO CATALOG 940-0222 KEY NO.
 (PARTS CATALOG ALSO CONTAINS COMPONENTS FOR MAJOR OPTIONAL FEATURES LISTED BELOW)
 WIRING DIAGRAM NO. 611-1127-05

PART NO.	QTY.	DESCRIPTION	PART NO.	QTY.	DESCRIPTION
Vacuum Booster :					
502-0053	1	Elbow, Pipe 45° - Low Oil Pressure			
503-0768	2	Clamp, Hose - Breather Tube			
154-1920	1	Manifold, Intake			
153-0489	1	Adapter Assembly - Choke			
150-1030	1	Kit, Vacuum Speed Booster Replacement - Includes Parts Marked #			
150-1031	1	#Kit, Diaphragm Replacement, Includes Gaskets			
150-0668	1	#Gasket, Diaphragm Plate			
150-0425	1	#Gasket, Booster to Manifold			
150-1354	1	#Spring, Internal			
150-0376	1	#Bracket, Internal Spring Adjustment			
516-0039	1	#Pin, Cotter			
150-0666	1	#Plate, Diaphragm			
516-0085	1	#Pin, Diaphragm Lever Pivot			
150-0471	1	#Spring, External			
813-0111	2	#Screw, Booster Mounting			
853-0008	2	#Washer, Lock			
815-0148	4	#Screw			
150-1332	1	#Shield, Heat			
526-0196	2	#Washer, Flat			
	1	#Housing, Booster - Not Sold Separately			
	1	#Cover, Booster Housing - Not Sold Separately			
134-3464	1	Scroll, Blower Housing			
309-0077	1	Switch, High Temperature			
812-0061	2	Screw, Round Head			
860-0006	2	Nut, Hex			
856-0001	2	Lockwasher			
508-0056	2	Washer, Flat Fibre			
508-0031	1	Grommet, Rubber			
336-2963	1	Lead, Temperature Cutoff			
160-0144	1	Strap, Ground - Temperature Switch			
337-0049	1	Strap Ground - Stator Thru Bolt			
149-1554	1	Line, Fuel - Carburetor to Pump			
149-1541	1	Pump, Fuel - Electric			
502-0196	1	Elbow, Pipe 90° Fuel Pump			
332-0556	1	Connector Fuel Pump			
201-2410	1	Armature Assembly, Generator			
203-0152	1	Commutator, Armature			
321-0174	2	Fuse (5 Amp, 32 Volt)			
338-1106	1	Wiring Harness			

SPECIAL PARTS LIST FOR MODEL 6.5NH-3CR SPEC 18629J
FOR STANDARD PARTS REFER TO CATALOG 940-0222 KEY NO.
(PARTS CATALOG ALSO CONTAINS COMPONENTS FOR MAJOR OPTIONAL FEATURES LISTED BEL
WIRING DIAGRAM NO. 611-1127-05

PART NO.	QTY.	DESCRIPTION	PART NO.	QTY.	DESCRIPTION
502-0053	1	Elbow, Pipe - Low Oil Pressure			
503-0768	2	Clamp, Hose - Breather			
153-0489	1	Adapter Assembly, Choke			
518-0004	1	Clip, Linkage - Governor			
149-1554	1	Line, Fuel - Carburetor to Pump			
337-0049	1	Strap, Ground - Mounted Stator Thru Bolt			
149-1541	1	Pump, Fuel Electric			
332-0556	1	Connector, Fuel Pump Lead			
502-0196	1	Elbow, Pipe - Fuel Pump Inlet			
321-0174	2	Fuse (5 Amp, 32 Volt)			
338-1106	1	Wiring Harness			

SPECIAL PARTS LIST FOR MODEL 6.5NH-FJ SPEC 23005R
 FOR STANDARD PARTS REFER TO CATALOG 940-0222 KEY NO.
 OPTIONAL GROUPS IN CATALOG ARE LISTED BY GROUP NO. BELOW WHEN USED.
 WIRING DIAGRAM NO. 611-1160-02

PART NO.	QTY.	DESCRIPTION	PART NO.	QTY.	DESCRIPTION
Gasoline Carburetion					
98-0985	1	Silkscreen, Negative	338-1454	1	Harness, Wiring - Remote
98-2899	1	Label, Warning	403-1523-01	1	Bracket, Lifting
98-3261	1	Silkscreen, Air Filter	403-1836	1	Plate, Mounting
98-3265	1	Silkscreen, Warning	501-0005	1	Line, Flex - Oil (Remote Oil Gauge)
98-3278	1	Label, Choke	502-0017	1	Connector, Oil Line
98-4394	1	Label, Service Instructions	502-0058	1	Tee, Oil Line
110-1761	2	Valve, Exhaust	503-1056	1	Hose, Duct - Preheater
134-3381	1	Scroll, Blower Housing	508-0005	1	Grommet, Rubber - Oil Line
134-4105	1	Flywheel (Includes Magnets)	508-0031	1	Grommet, Rubber - Scroll (Blower Housing)
140-1733	1	Bracket and Tube - Preheater	508-0056	2	Washer, Fiber - Scroll (Blower Housing)
140-1742	1	Wrapper, Air Cleaner - Preheater	520-0876	4	Stud, Cylinder Head (Install 2 Top Holes - RH, LH Heads) (3/8 x 2-3/4")
140-1743	1	Control, Air Temperature	520-0918	8	Stud, Cylinder Head (Install 4 Middle Holes - RH, LH Heads) (3/8 x 3")
149-1554	1	Line, Fuel Pump to Carburetor	520-0919	8	Stud, Cylinder Head (Install 4 Bottom Holes - RH, LH Heads) (3/8 x 2-19/32")
155-1256	1	U-Bolt, Air Duct Bracket			
160-0144	1	Strap, Plate to Condenser			
167-0218	1	Support, Hi-Tension Cable			
191-1847	1	Regulator, Voltage			
234-0642	1	Wrapper, Generator			
300-2170	1	Board, Printed Circuit			
301-6197	1	Box, Control			
301-6227	1	Bracket, Control Mounting			
307-1896	1	Relay, Start Solenoid			
309-0077	1	Switch, Temperature			
312-0027	1	Condenser, Ignition			
321-0165	1	Holder, Fuse			
323-1221	1	Connector, Cap - Control			
330-0004	1	Cover, Outlet Box			
330-0074	1	Box, Outlet			
337-0090	1	Strap, Ground			

PART NO.	QTY.	DESCRIPTION	PART NO.	QTY.	DESCRIPTION
		Gasoline Carburetion			
		Intake Valve Seals			
		Vacuum Cooled			

SPECIAL PARTS LIST FOR MODEL 6.5 NH-3CR SPEC 28861P
 FOR STANDARD PARTS REFER TO CATALOG 940-0222 KEY NO.
 OPTIONAL GROUPS IN CATALOG ARE LISTED BY GROUP NO. BELOW WHEN USED.
 WIRING DIAGRAM NO. 611-1142-04

PART NO.	QTY.	DESCRIPTION	PART NO.	QTY.	DESCRIPTION
Exhaust Heat Shields					
Valve Stem Oil Seals - Intake					
150-1075	1	Rod, Governor - Control			
150-1081	1	Joint, Ball (Socket)			
201-2523	1	Armature, Generator (Includes Parts Marked *)			
203-0152	1	*Commutator, Generator			
204-0110	1	*Ring, Collector - Generator			
510-0047	1	*Bearing, Ball			
232-2586	1	*Hub			
134-2749	1	Scroll, Blower Housing			
205-0116	1	Fan, Generator			
232-2827	1	Cover, Fan			
520-0782	1	Stud, Armature Thru			
516-0182	4	Pin, Dowel - Locating			
515-0015	1	Key, Extended Shaft			
353-0071	1	Resistor, Fixed - 8.3/3.8 Ohms 25/50 Watts			
304-0706	2	Bracket, Resistor Mounting			
304-0015	2	Washer, Centering - Resistor			
304-0580	1	Insulator, Resistor			
508-0008	1	Grommet, Control Box			
301-4038	1	Bracket, Control			
338-1337	1	Harness, Wiring - Control (Includes Parts Marked +)			
307-2562	2	+Relay, Ignition			
352-0161	1	*Resistor, Fixed			
357-0030	1	+Rectifier			

SPECIAL PARTS LIST FOR MODEL 6.5 NH-5DR SPEC 29842P

FOR STANDARD PARTS REFER TO CATALOG 940-0222 KEY NO.

OPTIONAL GROUPS IN CATALOG ARE LISTED BY GROUP NO. BELOW WHEN USED.

WIRING DIAGRAM NO. 611-1170-01

PART NO.	QTY.	DESCRIPTION	PART NO.	QTY.	DESCRIPTION
Manufactured for: General Cable			301-4634	1	Box, Control
2 Step Battery Charger			301-9011	1	Panel, Control
Valve Stem Oil Seals - Intake			301-9015	1	Cover, Control Box (Includes Schematic)
110-1761	2	Valve, Exhaust	308-0788	1	Switch, Ignition (With Key)
154-1864	1	Manifold, Exhaust - LH Down	312-0051	1	Capacitor (.5 M.F.D.)
150-2179	1	Bracket, Governor Arm	312-0146	1	Fuse, Cartridge
150-1075	1	Rod, Governor Control	332-2103	1	Strip, Marker - 6 Place (Use with Terminal Block 332-0699)
153-0115	1	Element and Cover, Choke	332-2313	1	Strip, Marker - 4 Place (Use with Terminal Block 332-0254)
150-1081	1	Joint, Ball - Socket			
140-1672	1	Wrapper, Air Cleaner			
201-2508	1	Armature, Generator (Includes Parts Marked *)			
203-0152	1	*Commutator, Generator			
204-0110	1	*Ring, Collector - Generator			
510-0047	1	*Bearing, Ball			
134-2749	1	Scroll, Blower Housing			
338-1332	1	Harness, Wiring - AC			
338-1820	1	Harness, Wiring - Control (Includes Parts Marked +)			
307-2562	2	+Relay, Ignition			
332-0699	1	+Block, Terminal			
332-1043	1	+Jumper, Terminal			
352-0161	1	+Resistor, Fixed			
357-0030	1	+Rectifier			
307-2588	1	Solenoid, Throttle (Includes Parts Marked °)			
307-2587	1	°Solenoid, Stop			
301-9868	1	°Bracket, Solenoid			
305-0383	1	Regulator, Voltage			
211-0365	1	Bell, End (Includes 4 Alignment Pins)			
353-0072	1	Resistor, 10 Ampere - 2 Step			
304-0706	2	Bracket, Resistor Mounting			
304-0015	2	Washer, Centering - Resistor			

PARTS NOT FURNISHED BY ONAN:

Exhaust Heat Shields

SPECIAL PARTS LIST FOR MODEL 6.5 NH-FD SPEC 29842R
FOR STANDARD PARTS REFER TO CATALOG 940-0222 KEY NO. _____
OPTIONAL GROUPS IN CATALOG ARE LISTED BY GROUP NO. BELOW WHEN USED.
WIRING DIAGRAM NO. 611-1170-01

PART NO.	QTY.	DESCRIPTION	PART NO.	QTY.	DESCRIPTION
Manufactured for: General Cable					
Gasoline Carburetion 2 Step Battery Charger					
PARTS NOT FURNISHED BY ONAN:					
Exhaust Heat Shields					

PARTS NOT FURNISHED BY ONAN:

Exhaust Heat Shields